



## Nokia PC Suite 4.4 User Guide



## and PC/PDA Connectivity Guide for the Nokia 6360 Phone

**NOKIA**  
CONNECTING PEOPLE



The wireless phone described in this guide is approved for use in TDMA 900mhz/1800mhz networks.

## Legal notices

Part No. 9354267, Issue No. 2

Copyright © 2002 Nokia. All rights reserved.

Nokia is a registered trademark of Nokia Corporation. Nokia, Nokia Connecting People, and Nokia original accessories logos are trademarks or registered trademarks of Nokia Corporation. Electronic document created in United States September 17, 2002.

Reproduction, transfer, distribution, or storage of part or all of the contents in this document in any form without the prior written permission of Nokia is prohibited.

Nokia operates a policy of continuous development. Nokia reserves the right to make changes and improvements to any of the products described in this document without prior notice.

UNDER NO CIRCUMSTANCES SHALL NOKIA BE RESPONSIBLE FOR ANY LOSS OF DATA OR INCOME OR ANY SPECIAL, INCIDENTAL, CONSEQUENTIAL, OR INDIRECT DAMAGES HOWSOEVER CAUSED.

THE CONTENTS OF THIS DOCUMENT ARE PROVIDED "AS IS." EXCEPT AS REQUIRED BY APPLICABLE LAW, NO WARRANTIES OF ANY KIND, EITHER EXPRESS OR IMPLIED, INCLUDING, BUT NOT LIMITED TO, THE IMPLIED WARRANTIES OF MERCHANTABILITY AND FITNESS FOR A PARTICULAR PURPOSE, ARE MADE IN RELATION TO THE ACCURACY, RELIABILITY OR CONTENTS OF THIS DOCUMENT. NOKIA RESERVES THE RIGHT TO REVISE THIS DOCUMENT OR WITHDRAW IT AT ANY TIME WITHOUT PRIOR NOTICE.

## Trademarks

Product names and/or brands mentioned herein are trademarks or registered trademarks of their respective holders.

## Export Controls

This product contains commodities, technology or software exported from the United States in accordance with the Export Administration regulations. Diversion contrary to U.S. law is prohibited.

## FCC/Industry Canada Notice

Your phone may cause TV or radio interference (for example, when using a telephone in close proximity to receiving equipment). The FCC or Industry Canada can require you to stop using your telephone if such interference cannot be eliminated. If you require assistance, contact your local service facility. This device complies with part 15 of the FCC rules. Operation is subject to the condition that this device does not cause harmful interference.

# Table of Contents

|          |  |           |
|----------|--|-----------|
| <b>1</b> | <b>Introduction.....</b>                                 | <b>1</b>  |
|          | System requirements .....                                | 1         |
|          | Compatible applications.....                             | 1         |
|          | Requirements for digital data and fax calls.....         | 1         |
|          | Printing this guide .....                                | 1         |
|          | Abbreviations .....                                      | 2         |
|          | Safety notes .....                                       | 2         |
|          | Infrared communications.....                             | 2         |
| <b>2</b> | <b>Install Nokia PC Suite 4.4.....</b>                   | <b>3</b>  |
|          | Important note about IR for Windows Me and XP users..... | 3         |
|          | PC Suite installation instructions .....                 | 3         |
|          | Remove PC Suite.....                                     | 4         |
| <b>3</b> | <b>Nokia Content Copier.....</b>                         | <b>5</b>  |
|          | Compatible phones.....                                   | 5         |
|          | Content Copier basics.....                               | 5         |
|          | Other phones .....                                       | 7         |
| <b>4</b> | <b>Nokia PC Composer.....</b>                            | <b>8</b>  |
|          | Tour of PC Composer .....                                | 8         |
|          | Compose a new ringing tone.....                          | 9         |
|          | Other PC Composer views .....                            | 10        |
|          | Save your new ringing tone.....                          | 10        |
|          | Transfer ringing tone to your phone.....                 | 10        |
|          | Create ringing tones from MIDI files .....               | 11        |
|          | Work with RTTTL ringing tone files.....                  | 12        |
| <b>5</b> | <b>Nokia PC Sync.....</b>                                | <b>13</b> |
|          | Configure PC Sync .....                                  | 13        |
|          | Understand the basics of Synchronization.....            | 14        |
|          | Initiate synchronization .....                           | 15        |
|          | Use the New Synchronization command .....                | 15        |
|          | Creating a custom contact list .....                     | 15        |
| <b>6</b> | <b>Nokia PC Graphics.....</b>                            | <b>18</b> |
|          | Tour of PC Graphics .....                                | 18        |
|          | Create a new graphic.....                                | 18        |
|          | Transfer a graphic to your phone .....                   | 19        |
|          | Work with an existing graphic .....                      | 19        |
|          | Open other bitmap files.....                             | 20        |
| <b>7</b> | <b>Nokia Phone Editor.....</b>                           | <b>21</b> |
|          | Before you begin.....                                    | 21        |
|          | Phone memory and PC storage locations.....               | 21        |
|          | Choose the right application for managing contacts ..... | 21        |
|          | Tour Nokia Phone Editor and Contacts window.....         | 22        |
|          | Manage contacts using Phone Editor.....                  | 22        |
|          | Edit Profiles and Caller groups .....                    | 23        |

|  |           |
|--|-----------|
| Edit Settings .....  | 24        |
| Launch other PC suite applications. ....   | 24        |
| <b>8 Wireless modem setup for Nokia 6360 phone .....</b>                         | <b>25</b> |
| Download modem driver .....  | 25        |
| Getting connected for the first time: DLR-3P cable (all Windows versions).....   | 25        |
| Getting connected for the first time using IR (Windows 95, 98, and Me).....      | 26        |
| Infrared and Windows 2000 Professional.....                                      | 27        |
| Windows 2000 Modem Setup instructions .....                                      | 27        |
| Getting connected for the first time: IR (Windows XP Home and Professional)..... | 28        |
| IR and Windows NT Workstation 4.0 .....  | 28        |
| Install infrared support for Windows 95. ....                                    | 28        |
| <b>9 Configure your data and fax software .....</b>                              | <b>29</b> |
| Observe the following before making or receiving digital data or fax calls ..... | 29        |
| Configure your data software .....   | 29        |
| Use Microsoft Dial-up Networking .....   | 29        |
| Other data applications .....  | 30        |
| For America Online (AOL) users.....  | 30        |
| Configuring your fax software.....   | 31        |
| <b>10 Connect to PalmOS devices .....</b>  | <b>32</b> |
| Learn about your phone as a wireless modem .....                                 | 32        |
| Connection options .....   | 32        |
| Connections preferences .....  | 33        |
| Make a dial-up connection .....  | 33        |
| <b>11 Connect to Microsoft PocketPC devices .....</b>                            | <b>34</b> |
| Learn about your phone as a wireless modem.....                                  | 34        |
| Connection options .....   | 34        |
| Configure a modem connection .....   | 35        |
| <b>12 Index .....</b>  | <b>37</b> |

# 1 Introduction


This guide provides you with the following information:

- installation instructions for Nokia PC Suite 4.4
- instructions for using Nokia PC Suite 4.4
- wireless modem installation instructions for your Nokia 6360 phone
- configuring your data/fax software for digital data calls (using your Nokia 6360 phone as a wireless modem).

## • SYSTEM REQUIREMENTS

To install and run Nokia PC Suite 4.4, you need:

- Nokia 6360 phone
- an Intel-compatible PC running Windows 95 (OSR 2.x), Windows 98, Windows NT Workstation 4.0 with SP 5 or greater (cable only), Windows Millennium Edition (ME), or Windows 2000 Professional
- at least 40 megabytes of free disk space
- an infrared port on your desktop PC or laptop computer and/or the optional DLR-3P cable
- a compatible PC Personal Information Manager (PIM) application for use with Nokia PC Sync


 **Note:** Nokia Content Copier (a component of Nokia PC Suite) supports a variety of Nokia phones, some of which make their connection to a PC via serial cable. For a list of compatible phones and connection methods, please see "Compatible phones" on page 5.

## • COMPATIBLE APPLICATIONS

Nokia PC Sync is compatible with the following Personal Information Manager (PIM) applications:

| Manufacturer | Application name/version  |
|--------------|---|
| Microsoft    | Schedule+ 7.0, 7.5<br>Outlook 97, 98, 2000, 2002<br>Outlook Express |
| IBM          | Lotus Notes 4.5, 4.6, 5.0<br>Lotus Organizer 97, GS, 5.0, 6.0       |

## • REQUIREMENTS FOR DIGITAL DATA AND FAX CALLS

 **Note:** This feature is available only if your service provider's network supports digital data calls. Please check with your service provider prior to sending or receiving digital data calls.

Before you can make digital data calls using your Nokia phone as a wireless modem:

- you must subscribe to digital data services with your service provider.
- your phone must be powered up, and digital service must be available. Digital data calls are not available when outside of a digital network.
- your phone must be connected to your PC or handheld device via infrared or the DLR-3P cable.
- your data or fax software must be running and must be configured to recognize your Nokia phone as the active modem (instructions to follow later in this document).

## • PRINTING THIS GUIDE

You may find it helpful to print this guide for future reference.

No other applications should be running during the installation of PC Suite and during wireless modem setup. Therefore, reading this guide using Adobe Acrobat reader during installation is not recommended. Printing a copy of this guide provides you access to the instructions during the installation process.

## • ABBREVIATIONS

For the purposes of this user guide, the following abbreviations are used:

| Abbreviation | Description  |
|--------------|--|
| PC           | Refers to both desktop and laptop computers              |
| IR           | Infrared   |
| PIM          | Personal Information Manager (PC-based software program) |

## • SAFETY NOTES

- Please make backup copies of all important data to protect against possible loss or alteration.
- When connecting to any other device, read its user guide for detailed safety instructions. Do not connect incompatible products.
- To avoid any potential loss of data, you should not make or receive calls while synchronizing data between the phone and a PC.
- Do not point the IR beam at anyone's eyes or allow it to interfere with other IR devices.

## • INFRARED COMMUNICATIONS

Infrared (IR) is one of the two available options for connecting your phone and PC. If you choose IR for your connection, please note that the preferable distance between two devices in an infrared connection is a range of three inches to three feet maximum. There must be no obstructions between the two devices and the IR ports of the two devices have to be pointing at each other.

Your Nokia phone is a Class 1 Laser Product.

### Enable infrared communications

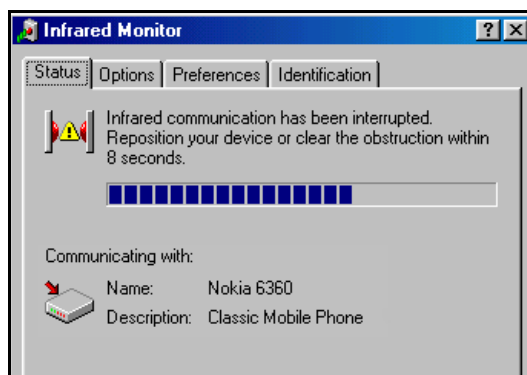
Windows Millennium Edition (ME) and Windows 2000 users do not need to enable infrared communications on their PC prior to using this feature. The infrared port is always active.

If you use Windows 95 or Windows 98, you can use the infrared control panel to activate or deactivate infrared communications. Before installing PC Suite, please enable IR communications on your PC.

For more information on enabling infrared communications on your phone, please refer to the infrared section in your phone's user guide.

### Interruptions to infrared communications

Windows provides visual and audible notification when it senses an interruption to infrared communications between your phone and PC. Windows allows you to re-establish infrared communications between the two devices so it can re-send the data that was being transferred when the interruption occurred.



### TIME-OUT

If the infrared connection between your phone and PC has not been re-established within 15 seconds, a "time-out" occurs, meaning Windows no longer searches for your phone and terminates the infrared connection.

## 2 Install Nokia PC Suite 4.4

Nokia PC Suite 4.4 is a collection of powerful tools that you can use to manage your phone's features and data. PC Suite consists of the following components:

- **Nokia Content Copier** allows you to copy data between two Nokia phones, to back up your phone's data to your PC, and erase data from your phone.
- **Nokia Connection Manager** allows you to monitor the serial connection between your phone and PC and switch to a different type of connection (cable vs. infrared) when copying data from one phone to another.
- **Nokia PC Composer** allows you to create new ringing tones for your phone.
- **Nokia PC Sync** allows you to synchronize contacts, calendar, and to-do list notes between your phone and PIM applications such as Microsoft Outlook and Lotus Organizer.
- **Nokia PC Graphics** allows you to create new caller group logos and picture messages or allows you to edit picture messages already in your phone.
- **Nokia Phone Editor** allows you to edit your phone book and settings from your PC.

### • IMPORTANT NOTE ABOUT IR FOR WINDOWS ME AND XP USERS

Your phone also functions as a wireless modem and is designed to be detected by Windows Plug and Play. During the PC Suite installation process, you are asked to choose how you want to connect your phone and PC – either via IR or the DLR-3P serial cable. If you select IR, you are prompted to enable infrared communications on your phone, then align the infrared ports of the 2 devices.

#### Plug and Play detection

Because infrared is always active on your PC (including automatic software installation for Plug and Play devices), the Windows Add New Hardware Wizard detects your phone as a new hardware device during the PC Suite installation. This interferes with the PC Suite software installation process.

#### Before installing PC Suite

Nokia recommends that Windows Me and XP users who want to use IR as their serial connection for PC Suite perform the modem installation prior to installing PC Suite. Please see "Wireless modem setup for Nokia 6360 phone" on page 25 and perform this task prior to installing Nokia PC Suite. Once you have performed the modem installation, you may continue with the installation instructions below.

### • PC SUITE INSTALLATION INSTRUCTIONS

Please download the setup application to a location on your hard drive. If you downloaded the application in segments, please double-click the .exe file and follow the instructions to extract the installer application from the segments.



**Important:** If you use Windows 98 (First or Second Edition) and plan on using IR to connect to your PC, please enable IR communications on your PC *now*.

Once the software download is complete and/or the segments have been rejoined:

- 1 Double-click the installation file **Nokia PC Suite 4.4.exe** that you downloaded to your hard drive.
- 2 Click **Next** to begin the software installation process.
- 3 Please read the end-user license agreement, then click **Yes** to accept its terms.
- 4 Review the safety notes, then click **Next**.
- 5 Click **Next** to install all PC Suite components (or clear the check boxes of the components you do not want to install).
- 6 Select the language you wish to use with PC Suite, then click **Next**.



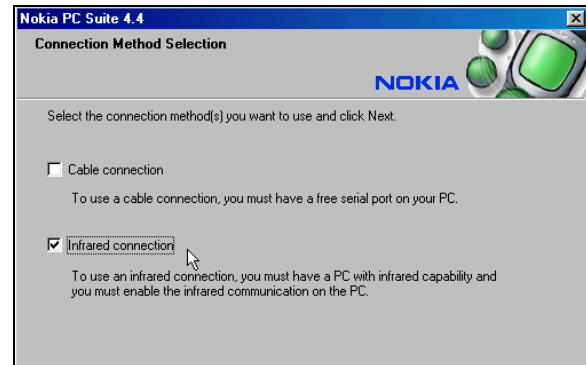
**Note:** If you have a PIM application installed on your PC (Outlook, Lotus Organizer, etc.) and you want to use it with Nokia PC Sync, it is recommended that you select the same language used by your PIM.

## Select your connection method

During the installation process, you are asked to select how you plan on making a connection to your PC (either infrared or the DLR-3P serial cable).

You can only use one method at a time. However, you may want to select both options during installation in the event you want both connection options available at a later time.

- 1 Select the type of connection you want, then click **Next**.
- 2 Follow the instructions provided on either the **Infrared connection** or **Cable connection** screen, then click **Next**.
- 3 Continue through the installation wizard, then click **Finish** to restart your PC.



2

## Change language

The language chosen during installation for PC Suite applies to all of the PC Suite components and Help applications. If you need to change PC Suite to a different language, you must reinstall PC Suite.

### • REMOVE PC SUITE

If you need to remove PC Suite (including all components), please use **Add/Remove Programs** (located in **Control Panel**). Remember to close any PC Suite applications that are running before you begin.

#### TO REMOVE PC SUITE 4.4:

- 1 Click **Start**, point to **Settings**, then click **Control Panel**.
- 2 Double-click **Add/Remove Programs**.
- 3 Scroll through the list of installed applications, then click **Nokia PC Suite 4.4**.
- 4 Click the **Add/Remove** button.
- 5 Click **Remove** from the Nokia PC Suite Setup window, then click **Next**.
- 6 Follow the on-screen instructions until the setup wizard has completed removing the program.
- 7 Restart your computer to complete the removal process.

### 3 Nokia Content Copier

Nokia Content Copier is a powerful application that allows you to perform the following tasks:


- Copy data from a compatible phone to your 6360 (or between 2 Nokia 6360 phones).
- Back up your phone's data to your PC and then restore the data back to your phone.
- Erase data from your phone.


#### • COMPATIBLE PHONES

One of the most powerful features of this application is its support of other compatible phones. This capability is especially useful if you are upgrading to a new handset and want to transfer data from your old phone to your new one. You can also use this application to transfer information between other 6360 phones in your family.

The following table shows a list of phones compatible with Nokia Content Copier (other than 6360), as well as the method of connection to the PC:

| Nokia model: | Method of connection:                 |
|--------------|---------------------------------------|
| 3320/3360    | IR (infrared)                         |
| 5190/6190    | DAU-9P serial cable                   |
| 6340, 6360   | DLR-3P serial cable and IR (infrared) |
| 7160         | DLR-3P serial cable and IR (infrared) |
| 7190         | DLR-3P serial cable and IR (infrared) |
| 8290, 8890   | IR (infrared)                         |
| 8390         | IR (infrared)                         |

 **Important:** Content Copier does not support copying data *to* any of the phones listed above. Data can only be read *from* these phones, then copied to 6360.


 **Note:** Nokia Content Copier does not support certain 5100 and 6100 series phones. For more information on specific models of incompatible phones, please see "Other phones" on page 7.

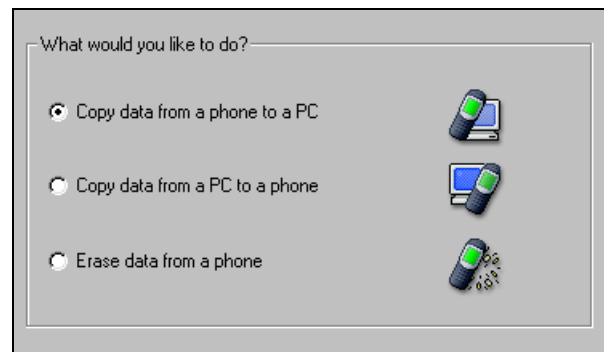
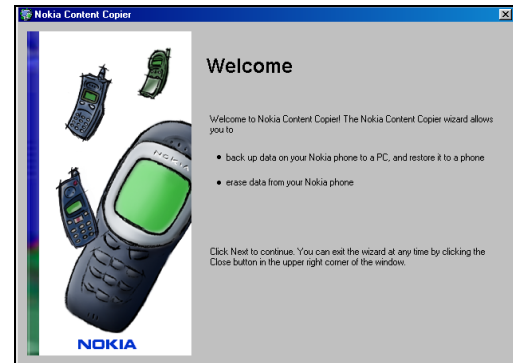
#### • CONTENT COPIER BASICS

Nokia Content Copier uses a wizard-style interface to help you perform the tasks listed above. If you are copying data from one of the compatible phones above using a cable connection, please make sure the phone is connected to your PC via cable before you begin.

Launch Content Copier from the Start Menu (**Start - Programs - Nokia PC Suite 4 - Content Copier**), then select the task you would like to perform. Follow the on-screen instructions to complete the task you want to perform.

The following pages contain basic information and tips on using Nokia Content Copier.

 **Important:** Windows Millennium Edition (ME) users should have already performed the wireless modem installation before installing PC Suite. If the **Add New Hardware Wizard** launches when you establish an infrared connection between phone and PC, please click the wizard's **Cancel** button. Close Content Copier, then proceed to "Wireless modem setup for Nokia 6360 phone" on page 25 and follow the instructions. You can return to Content Copier once the modem setup has been completed.



## Copy information from the source phone

When you select **Copy data from a phone to a PC**, Content Copier transfers all compatible data types (phone book, calendar, to-do, caller groups, etc.) from the phone containing the data you want to back up or transfer. This phone is called the "source phone" and can be one of the phones listed on the previous page, or another Nokia 6360 phone.

- If you are copying your phone's data and want to save it on your PC, Nokia Content Copier guides you through the process of saving the information to your PC's hard drive.
- If you are copying data from a different source to your Nokia 6360, the data must first be saved to your PC. Once you have connected your 6360 ("target" phone) via IR or cable, follow the instructions found below: "Copy information to the target phone".

## Save the source phone data

Once the source phone's data has been read, Content Copier allows you to save the information to your PC's hard drive. Click the **Save Data** button, then navigate to the location on your hard drive where you want the information stored.

Nokia Content Copier automatically names the files for you, based on the type of data that is read from the source phone.

## Copy information to the target phone

Before you can copy information to the target phone, you need to load the information into the PC's memory. You should have already saved the source phone's data to your PC via the **Copy data from a phone to a PC** option.

- 1 Launch **Content Copier**, then click **Next**.
- 2 Click **Next**, then click **Copy data from a PC to a phone**.
- 3 Click the **Select source Folder** button. Locate the directory containing the information you want to use.
- 4 Click **Next** to begin copying data from your PC to your phone.

Once the source phone's information has been loaded from your PC's hard drive, you are asked to determine the types of information you want copied into your phone. The compatible data types are displayed along with the ability to select the types of data you wish to transfer.

Use the check boxes next to the data types to select or deselect the information you want to copy to your phone.

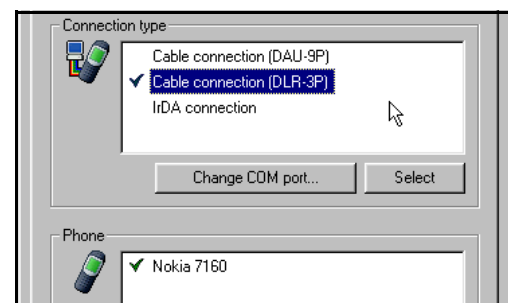
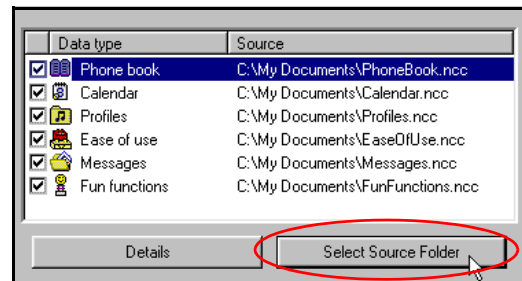
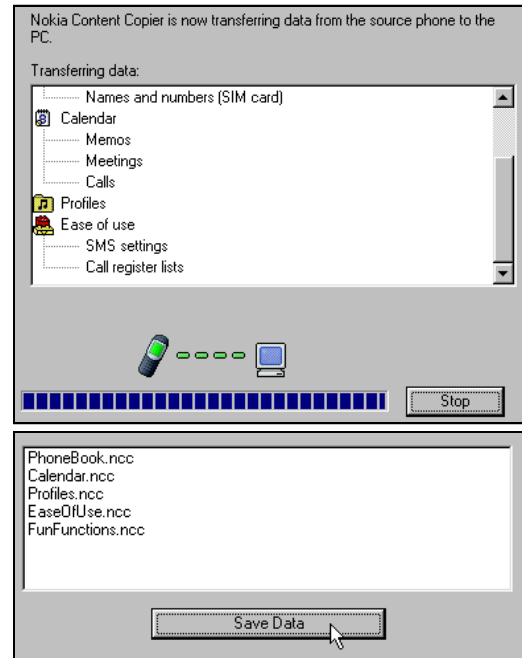
## Nokia Connection Manager

You may need to use Nokia Connection Manager to select the type of connection you want Content Copier to use during various stages of the process. For example, if you copy data from one of the phones listed on the previous page and the source phone requires a serial cable, click Content Copier's **Connection** button to launch Connection Manager. Then select the correct cable option for the source phone.

To switch connection type while using Content Copier:

- 1 Establish the appropriate connection between your phone and PC (via IR, DLR-3P, or DAU9-9P), then click the **Connection** button.
- 2 Click the desired connection type, then click **Select**.
- 3 Allow Nokia Connection Manager to detect your phone.
- 4 Click **OK** to return to Nokia Content Copier.

If your phone is not detected right away, switch to one of the other connection types, then back to the desired connection type. This forces Connection Manager to redetect your phone.





**Note:** If you are copying data from one phone to another and the source phone uses an infrared connection, stop the infrared connection between source phone and PC. Allow the Windows warning message regarding interrupted infrared communications to completely time-out before aligning the target phone with your PC's infrared port. By doing so, you allow Connection Manager to detect your phone more quickly.

### Nokia Content Copier log

When you have successfully completed one of the Nokia Content Copier tasks, the **Finish** screen is displayed along with a log of the tasks that were just performed. At the **Finish** screen, you have the following options:

- Click **Save** to save the log (.LOG) file to your PC's hard drive.
- Click **New Action** to return to the beginning of the Nokia Content Copier wizard.
- Click **Finish** to exit Nokia Content Copier.

3

### • OTHER PHONES

Due to software and hardware differences between generations of phone technology, the following phones are *not* compatible with Content Copier:

| Protocol | Nokia model number   |
|----------|--|
| TDMA     | 5120, 5125, 5160, 5165<br>6120/6120i, 6160/6160i/6160m<br>6161/6161i, 6162/6162i/6162m, 8260 |
| CDMA     | 3280, 3285<br>5170/5170i, 5180/5180i, 5185<br>6180/6180i, 6185/6185i                         |
| GSM1900  | 3390, 3395   |

## 4 Nokia PC Composer

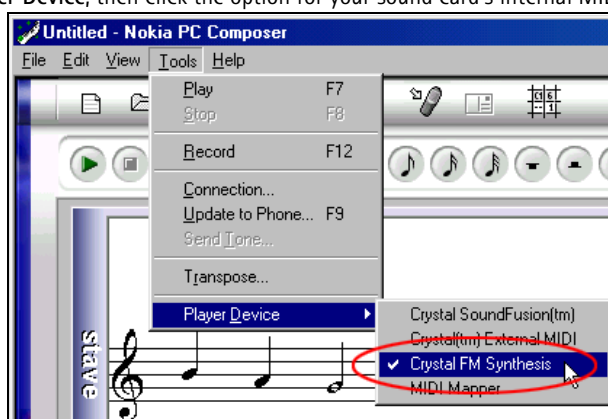
Nokia PC Composer allows you to create new ringing tones for your Nokia phone. Once you create a new ringing tone, you can transfer it to your phone (via IR or DLR-3P cable).

PC Composer also allows you to open Standard MIDI files (type I), edit them, and convert them to ringing tones. You can save your ringing tones as either .mid (MIDI) or .ott (ringing tone) file formats on your PC's hard drive. Once saved on your hard drive, you can also share your new ringing tones via e-mail with friend or family who also use a compatible version of PC Suite.

### PC hardware setup

PC Composer "plays" the notes as they are written to the music staff. You can also play back the entire composition. Before you begin writing, you must select your PC sound card's MIDI playback device.

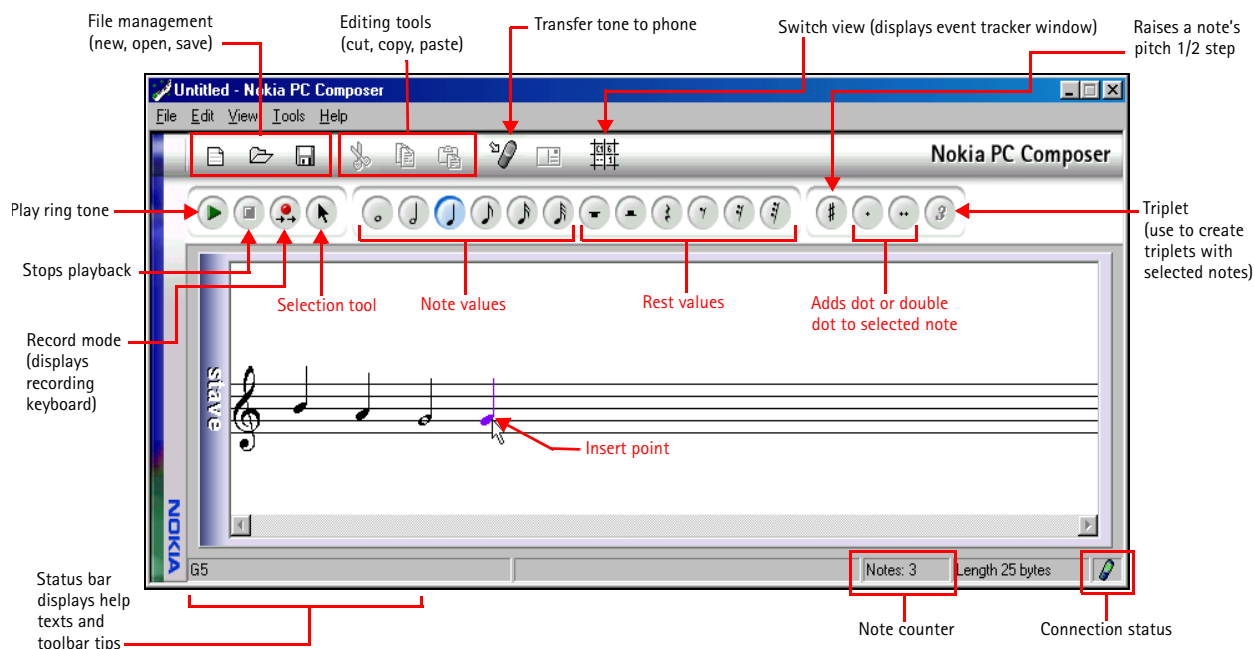
- 1 Click **Start**, point to **Programs**, point to **Nokia PC Suite**, then click **Nokia PC Composer**.
- 2 Click **Tools**, point to **Player Device**, then click the option for your sound card's internal MIDI playback device.



Once your MIDI playback device is set, you can hear each note as it is added to the staff or listen to the entire ringing tone (when you click the **Play** button).

### • TOUR OF PC COMPOSER

The illustration below introduces you to PC Composer's tools and commands:




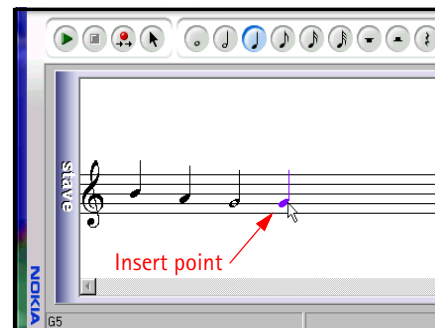
You can launch PC Composer without having an infrared connection between the phone and your PC. The connection status indicator displays the status of the connection between your phone and PC.

## • COMPOSE A NEW RINGING TONE

Your new ringing tone can consist of up to approximately 70 notes and rests. The phone discards any notes or rests beyond 70. Use the note counter to the right of the Status Bar to monitor the length of your new ringing tone.

### Create a new ringing tone

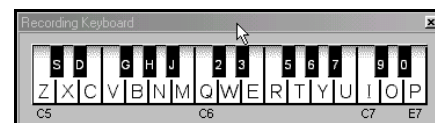
- 1 Launch **Nokia PC Composer** (click **Start**, point to **Programs**, point to **Nokia PC Suite**, then click **Nokia PC Composer**).
- 2 Click the appropriate note (or rest) button.
- 3 Using the insert point, click the desired line or space on the staff (result: the note is placed on the staff, and is played by your PC's sound card).
- 4 Continue entering the desired notes and/or rests until you have completed your new ringing tone.
- 5 Click the **Play** button  to play the ringing tone from the beginning.



4

### Enter notes using the recording keyboard

In addition to placing the notes on the staff using the mouse, you can also enter the pitches from your computer keyboard. The recording keyboard is displayed and identifies the computer keyboard equivalents to notes on a piano or MIDI keyboard.



- 1 Click the **Record** button  to display the recording keyboard.
- 2 Click the desired note value button on the toolbar.
- 3 Press the key on your computer keyboard associated with the desired note.




**Tip:** If you want a longer or shorter note, select the desired note value from the toolbar, then enter the note's pitch from your keyboard. Note values cannot be selected from your computer keyboard.

### Edit a ringing tone

You can edit the pitch or duration of the notes already entered on the music staff.

#### CHANGE THE PITCH OF A NOTE

- 1 Click the **Selection** tool button  on the toolbar.
- 2 Move the cursor over the note you wish to change (result: the arrow cursor changes to a hand)
- 3 Drag the note up or down on the staff to the correct location.



#### CHANGE THE DURATION OF A NOTE OR REST

- 1 Click the desired note button (or rest button) on the toolbar.
- 2 Move the cursor over the note or rest you wish to change (result: insert point appears)
- 3 Click the note or rest to replace it with the new note value.

### Delete notes and rests

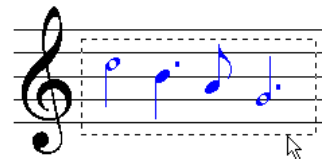
You can delete a wrong note/rest or group of wrong notes/rests at any time.

#### DELETE A SINGLE NOTE/REST

- 1 Click the **Selection** tool button on the toolbar.
- 2 Click the note or rest you want to delete, then press your keyboard's **Delete (DEL)** key.

**DELETE MULTIPLE NOTES/RESTS**

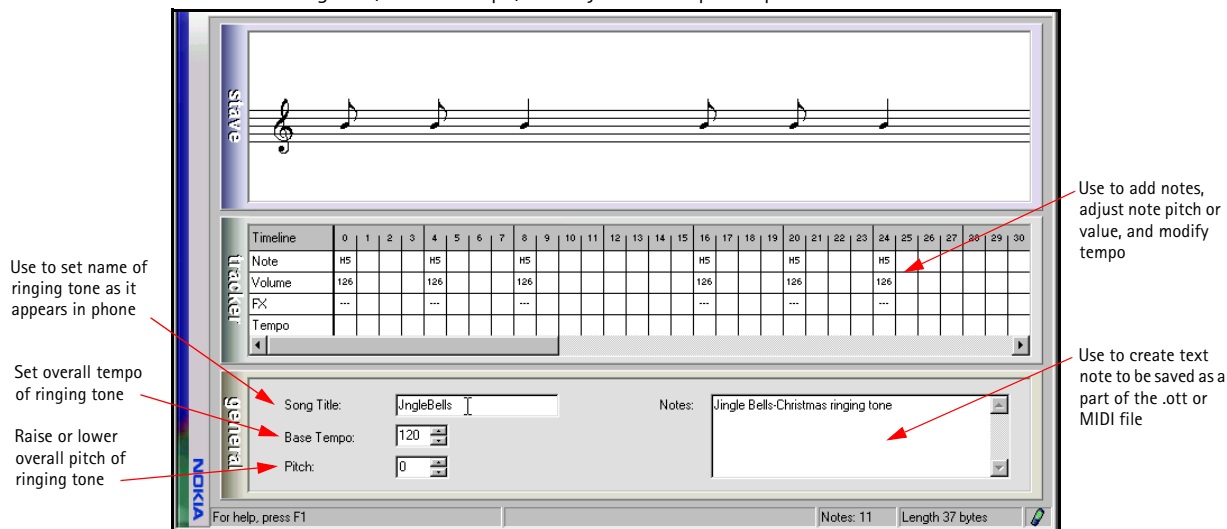
- 1 Click the Selection tool button on the toolbar.
- 2 Draw a bounding outline (marquee) with the mouse around the group of notes or rests you want to delete (result: the group of notes are highlighted in blue).
- 3 Press your keyboard's Delete (DEL) key.




## • OTHER PC COMPOSER VIEWS

In addition to using the standard music staff to compose new ringing tones, the following options are available:


- **Tracker** – displays notes as events on a time line as well as other MIDI and tempo data
- **General** – used to set Song Title, overall tempo, and adjust overall pitch up or down



Click the Switch view button  to cycle through the various view options. To view the General information pane, click Tools, then click General.

## • SAVE YOUR NEW RINGING TONE

When you are ready to save your new ringing tone, click the **Save** button on the toolbar. Use the **Save as** dialog box to set file name and location to save the new file. Default file type for your new ringing tone is **.mid** (MIDI). However, you need to save your work as ringing tone format (**.ott**) before sending your new ringing tone to the phone. Use the **Save as type** drop down box to select the desired file type.

 **Note:** You can create and save as many new ringing tones as you have space on your hard drive. However, your phone can only hold up to five new ringing tones at any given time.


## • TRANSFER RINGING TONE TO YOUR PHONE


Once you have created a new ringing tone and have saved it to your PC, you can transfer the tone to your phone. When your phone receives the new ringing tone, it displays the message **New ringing tone received**. Press the **Options** key and scroll to the following options:

- **Playback** – plays the new ringing tone
- **Save tone** – saves the ringing tone to your phone
- **Discard** – discards the new tone and returns you to the Start screen.

### Transfer via infrared or cable

Before transferring the ringing tone to your phone, make sure you have established a connection between your phone and PC. Check the status indicator in the lower right corner of the PC Composer window to verify the status of your connection.

 **Important:** Make sure to display the **General** pane and enter a name for your new ringing tone. If you fail to do so, your new ringing tone may not be named properly.

To transfer your ringing tone, click the **Update to Phone** button on the toolbar  (or select **Update to Phone** from the Tools menu).

## • CREATE RINGING TONES FROM MIDI FILES


Nokia PC Composer allows you to open Standard MIDI files, then convert the data to ringing tone format. Now you can carry your favorite PC MIDI file as a ringing tone in your phone!

### About Standard MIDI files

Standard MIDI files of popular music frequently consist of multiple instruments (bass, drums, organ, etc.). Typically, there is also a track dedicated to the song's melody. There are two types of Standard MIDI files:

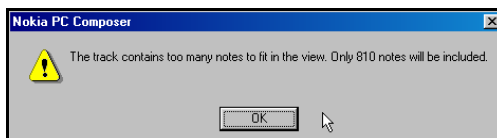
- Type 0 files – 1 track of MIDI data containing all the various instruments; each instrument assigned to different MIDI "channel."
- Type 1 files – each instrument has its own dedicated track and MIDI channel. Track/instrument names are embedded in the file as text information.

PC Composer's interface interprets the multiple track information and allows you to choose the correct track or instrument.

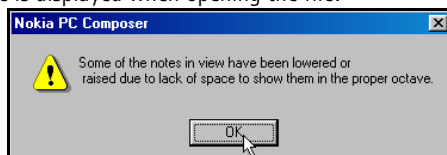
 **Important:** PC Suite supports Type 1 MIDI files only. PC Suite cannot display the necessary note and instrument data when opening Type 0 MIDI files. If you try to open a Type 0 file, no data is displayed.

### Before you begin

If the MIDI sequence you want to use contains too many notes, the following error message is displayed when trying to open the file:




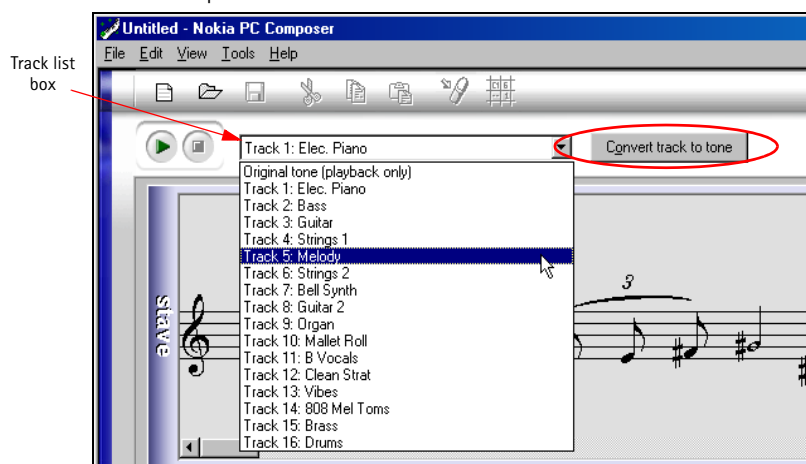
Nokia PC Composer processes MIDI notes in octave 5 and 6 of the MIDI keyboard. If your MIDI sequence contains notes outside this range, the following error message is displayed when opening the file:



### OPEN A STANDARD MIDI FILE

To open a MIDI file:

- 1 Click the **Open** button  (or select **Open** from the File menu).
- 2 Locate the MIDI file you want to use as a ringing tone, then click **Open**.
- 3 Use the **Track list box's** drop-down arrow and locate the desired track.



- 4 Click the **Convert track to tone** button to convert MIDI information to ringing tone format.

## Edit and save

You may need to edit the converted MIDI information (adjust note lengths, remove extra rests, etc.) so that the ringing tone plays correctly. For more information on editing a ringing tone, please refer to "Edit a ringing tone" on page 9.

When you have completed editing the ringing tone, you can save your work in ringing tone (.ott) format, then send the new tone to your phone. For more information on saving, please refer to "Save your new ringing tone" on page 10. For more information on sending a ringing tone to your phone, please refer to "Transfer via infrared or cable" on page 10.

## • WORK WITH RTTTL RINGING TONE FILES

Ringling Tones Text Transfer Language (RTTTL) files are text files that contain various types of information that make up a ringing tone. When your phone receives a ringing tone over the air, your phone is actually receiving the information in RTTTL format. The RTTTL file includes song title, scale and tempo indications, and the actual note information.

An RTTTL formatted ringing tone may appear as follows:

**babbino:d=4,o=5,b=140:g#,g#,g#,2c6,g,2f,8p,2d#,g#,a#,c6,2g#,g#6,2d#6**


song title      scale and tempo data      note data

## Use RTTTL data from the Internet

The Internet has become a popular source for sharing ringing tones in RTTTL format. If you find a ringing tone Web site displaying the RTTTL data, you can create your own RTTTL files by pasting the data into a text editor program (for example: Notepad), then save the file using the .txt file extension.

PC Composer can open (and save) ringing tones in RTTTL format. Songs you compose in PC Composer can be saved as RTTTL files, then shared with family and friends via e-mail (for example).

## Open an RTTTL file

- 1 Click the **Open** button  (or select **Open** from the File menu).
- 2 Click the **File of type** drop down arrow, then select **RTTTL files (\*.txt)** from the list of available file types.
- 3 Locate the RTTTL file on your hard drive or other removable disk drive, then double-click the file name to open.
- 4 Click the **Convert track to tone** button and convert file to ringing tone format.

You can now send the ringing tone to your phone, edit the ringing tone (as needed) and/or save the ringing tone as .ott (ringing tone) format on your hard drive.

## 5 Nokia PC Sync

Nokia PC Suite allows you to synchronize the contact and calendar information in your PC's Personal Information Manager (PIM) software and your Nokia mobile phone. You can use Nokia PC Sync to keep information up-to-date in both locations.

PC Sync supports a variety of PIM applications, including Microsoft Outlook, Outlook Express (via Windows Address Book), and Lotus Organizer. PC Sync also offers a wide variety of synchronization options so that you can personalize the way you want your information managed.



**Warning:** To avoid any potential loss of data, you should not make or receive calls while synchronizing data between the phone and your PC. Nokia PC Sync cannot be used while a data call is in progress. Likewise, you cannot initiate a data call while synchronizing data with PC Sync.



**Important:** Remember to make backup copies of all important data to protect against possible loss or alteration.

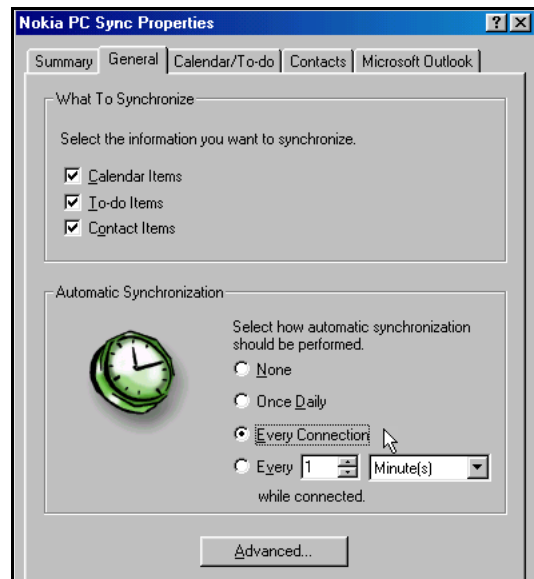
### • CONFIGURE PC SYNC

The first time you run Nokia PC Sync, you must configure PC Sync to work with your PIM application. Once you have customized PC Sync, you can proceed with synchronizing your PIM data with your phone.

- 1 Establish a connection between your phone and PC (IR or cable).
- 2 Launch Nokia PC Sync (click **Start**, point to **Programs**, point to **Nokia PC Suite 4**, then click **Nokia PC Sync**).
- 3 Select your PIM application from the drop-down list, then click **OK**.
- 4 Click the **More** button to view a summary of current/default settings.

#### Set General synchronization properties

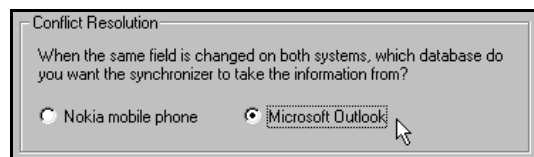
- 1 Click the **General** tab, then select the information you want to synchronize.
- 2 Click the desired option for automatic synchronization (example: **Every connection**).
- 3 Click the **Advanced** button to specify additional options, including resolving synchronization conflicts (see below)



#### SYNCHRONIZATION CONFLICTS

A synchronization conflict occurs when you change or edit a contact, calendar or to-do list note in both your phone and PIM between synchronization sessions. By default, PC Sync resolves the conflict by treating your phone as the correct information source.

To change conflict resolution properties, click the option associated with your PIM application.

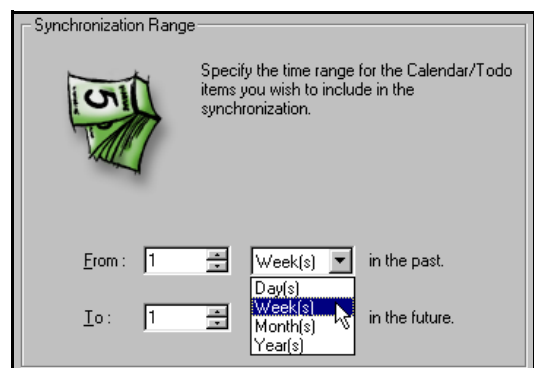


#### Set Calendar and Contacts properties

Your PIM application's storage capabilities are much more extensive than those of your phone. Use the Calendar and Contacts tabs to define the kinds and amount of information synchronized.

For more information about the capacity of your phone's phone book and reminder list, please refer to the technical specifications section of your phone's user guide.

- 1 Click the **Calendar/To-do** tab.
- 2 Use the drop-down lists to define the range of time PC Sync uses during synchronization.



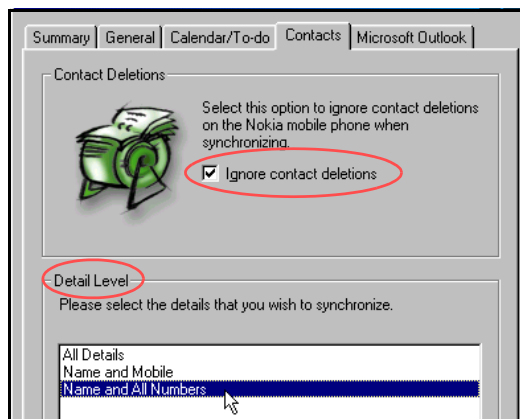
- 3 Click the **Contacts** tab.
- 4 Select the details you want synchronized with your phone.

### CONTACT DELETIONS

By default, contacts deleted from your phone are not deleted from your PIM when you synchronize. If you accidentally delete a contact from your phone, you can restore it by synchronizing again.

Deselecting the **Ignore contact deletions** option instructs PC Sync to permanently delete the corresponding contact in your PIM. Choose this option *only* when you are certain you want PC Sync to delete the PIM contact (and all details) associated with the deleted phone book entry.

**Warning:** This action cannot be undone!



### Set PIM properties

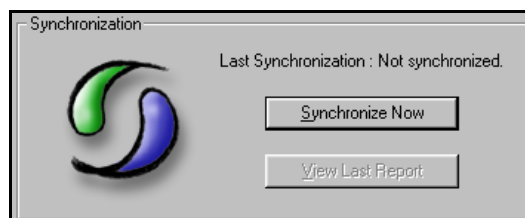
The last properties tab is labeled with the name of your PIM application. Use this properties tab to modify how PC Sync communicates with your PIM's resources. For example: If your PC is configured for multiple users, the default location of your PIM's databases may be stored in a user profile directory (vs. the default location for single-user PCs). PC Sync returns an error message if it cannot find your PIM's data.

Use the PIM properties tab to select the correct location of your PIM's databases containing current contacts, calendar, and to-do list information.

### Synchronizing for the first time

Once you have customized PC Sync for your uses, you are ready to synchronize your phone and PIM.

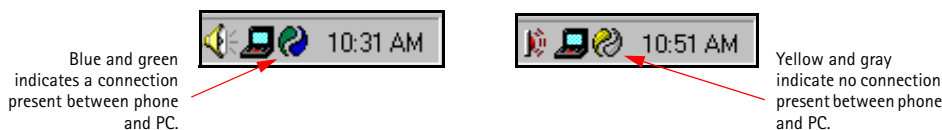
- 1 Click the **Summary** tab
- 2 Click the **Synchronize Now** button.
- 3 Observe the synchronization status indicator.
- 4 Click the **OK** button when synchronization is complete.



**Important:** Please refer to the PC Suite Troubleshooting document in the event synchronization is not successful or if PC Suite notifies you of errors. A link to this document can be found in the Nokia PC Suite 4 Program Group.


## • UNDERSTAND THE BASICS OF SYNCHRONIZATION

Nokia PC Sync remains running in the background after you synchronize for the first time. PC Sync places an icon in the Task Bar tray, indicating that the application is running. The colors of the icon change, depending on the status of the infrared connection between your phone and PC. Please refer to the examples below:



### Exit PC Sync

Once setup and first synchronization is complete, you can either leave the program running in the background, or you can exit PC Sync. To exit PC Sync:

- right-click the PC Sync tray icon , then click **Exit**.

### Start PC Sync

You have two options for launching Nokia PC Sync:

- on an as-needed basis from the **Start** menu
- automatically upon startup

**TO ENABLE PC SYNC ON STARTUP**

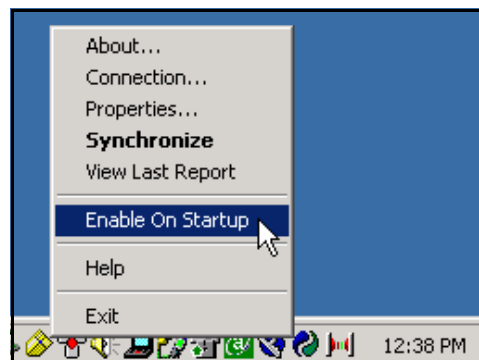
- 1 Establish an infrared link between your phone and PC.
- 2 Launch PC Sync from the **Start** menu.
- 3 Right-click the PC Sync tray icon, then click **Enable on startup**

**View other PC Sync options**

There are several other options available from the PC Sync options menu (from the tray icon). With the phone connected to your PC, right-click on the tray icon, then click any of the following options:

- **About** - to view information about the PC Sync program
- **Connection** - to check the status of the PC/phone connection
- **Properties** - to modify current PC Sync settings (change frequency of synchronization, types of data synchronized, etc.)
- **Synchronize** - to initiate synchronization of data
- **View Last Report** - to view information about the last synchronization attempt
- **Help** - to launch the on-line Help files
- **Exit** - closes the PC Sync program

To disable the auto start features, right-click on the **PC Sync** icon, then click **Enable On Startup** again.



5

## • INITIATE SYNCHRONIZATION

PC Sync initiates synchronization between your phone and PC when you start the program from the **Start** menu. To synchronize your data again while the program is still running, right-click the PC Sync tray icon, then click **Synchronize**.

## • USE THE NEW SYNCHRONIZATION COMMAND

If at some point you change PIM applications or upgrade to a newer version of your current PIM, you must configure PC Sync to work with the new application. Select **New Synchronization** from the Nokia PC Suite program group, then follow the instructions on page 13.

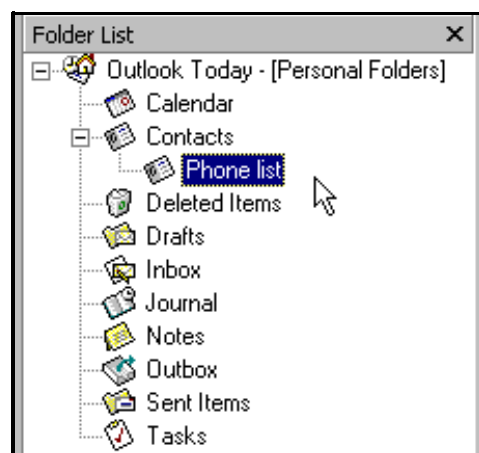
 **Important:** Do not use **New Synchronization** to launch PC Sync and initiate synchronization between your phone and PC.

## • CREATING A CUSTOM CONTACT LIST

Users who have more than 500 names and numbers in their PIM should create a custom contact list or subset of their master contact list. Depending on the PIM application you use, you may need to create a new contact database file or create a new folder for storing the custom contact list.

**Outlook users**

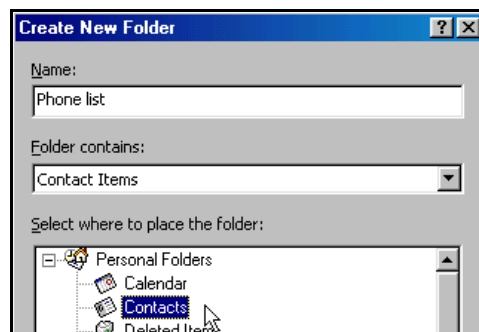
Outlook users can create folders and sub-folders in their Outlook database files. To create a custom contact list, first create a new folder to store contacts. Then copy the desired contact information from your main contacts folder to the new folder. PC Sync allows you to synchronize your phone with the Outlook contacts folder of your choosing.




### CREATE A NEW FOLDER FOR PHONE CONTACTS


To create a new sub-folder for a custom contact list:

- 1 Click **File**, point to **Folder**, then click **New Folder**.
- 2 Type the name of your new folder (example: **Phone list**).
- 3 Click the **Folder contains** drop-down arrow, then click **Contact Items**.
- 4 Select a location for your new folder (example: click **Contacts** to make **Phone list** a sub-folder of your main **Contacts** folder).
- 5 Click **OK** to confirm your selection.




### COPY CONTACTS TO CUSTOM PHONE LIST

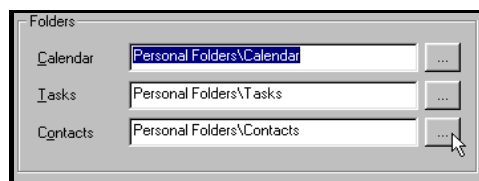
- 1 Click the **Contacts** button on your Outlook bar .
- 2 Select the contacts you want to appear in your custom list (Hold the **CTRL** key, then click to select multiple contacts that are not adjacent to each other).
- 3 Click **Edit**, then click **Copy** (or press **CTRL + C**).
- 4 Select your custom folder from the **Folder List** (example: **Phone list**), or press **CTRL + Y** to display **Go to Folder** dialog box.
- 5 Click **Edit**, then click **Paste** (or press **CTRL + V**) to paste copies of the selected contacts into the new folder.

 **Important:** If you decide to drag-and-drop contacts between your main **Contacts** folder and the new custom folder, make sure to hold the **CTRL** key while dragging, then release the mouse button first. Failure to use the **CTRL** key during drag-and-drop *moves* all selected contacts to the new folder.

### UPDATE PC SYNC'S OUTLOOK SETTINGS

To update PC Sync's settings to synchronize with your custom list:

- 1 Establish an infrared connection between your phone and PC.
  - 2 Launch Nokia PC Sync from your PC's **Start** menu.
- If you have PC Sync enabled on startup, right-click the PC Sync tray icon, then click **Properties**.
- 3 Click the **Microsoft Outlook** tab.
  - 4 Click the **Contacts** browse button , then select your custom folder. Click **OK** to confirm your selection.
  - 5 Click the **Summary** tab, then click **Synchronize Now** to synchronize your phone and custom phone list.



### Other PIM applications

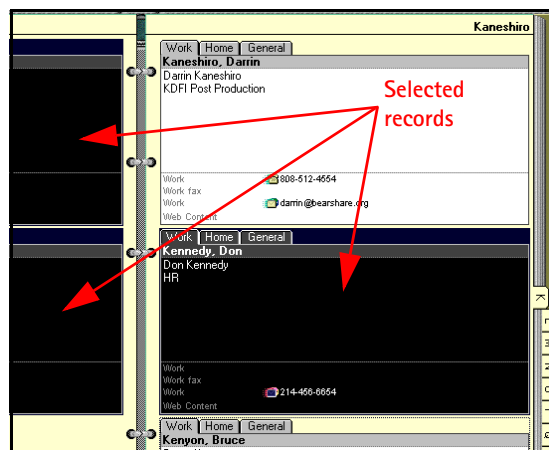
Other PIM applications (such as Lotus Organizer) require that you create a completely new database file for your custom contacts list. Once you create a new database file, copy the desired contact information from your main contacts file to the new contacts file. PC Sync allows you to synchronize your phone with the contacts file of your choosing.

### CREATE A NEW DATABASE FILE (EXAMPLE: LOTUS ORGANIZER)

- 1 With Lotus Organizer running, click **File**, then click **New**.
- 2 Click **File**, then click **Save As**.
- 3 Enter a name for your custom phone list (example: **Phone list**).


### COPY CONTACTS TO CUSTOM PHONE LIST

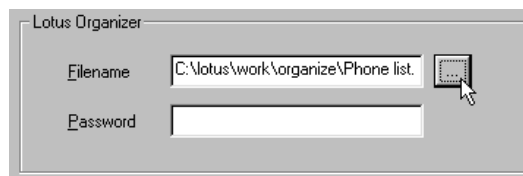
- 1 From File Manager, open your default Organizer database (c:\lotus\work\organize\<filename>)
- 2 Click the **Contacts** tab, then click the desired alphabet tab.
- 3 Select the desired contacts for your custom list.  
**Tip:** Hold the **CTRL** key to select multiple contacts that are not adjacent to each other.
- 4 Continue by clicking subsequent alphabet tabs and selecting the desired contacts.
- 5 Click the **Copy** button (or press **CTRL + C**).



- 6 Use the Windows Task Bar to switch back to your new contacts list, then click the Contacts tab.
- 7 Click the Paste button (or press CTRL + V) to paste copies of the selected contacts into the new list.

#### UPDATE PC SYNC'S LOTUS ORGANIZER SETTINGS

- 1 Establish an infrared connection between your phone and PC.
- 2 Launch Nokia PC Sync from your PC's Start menu.  
If you have PC Sync enabled on startup, right-click the PC Sync tray icon, then click **Properties**.
- 3 Click the Lotus Organizer tab.
- 4 Click the Contacts browse button , then select your custom folder. Click OK to confirm your selection.
- 5 Click the Summary tab, then click **Synchronize Now** to synchronize your phone and custom phone list.



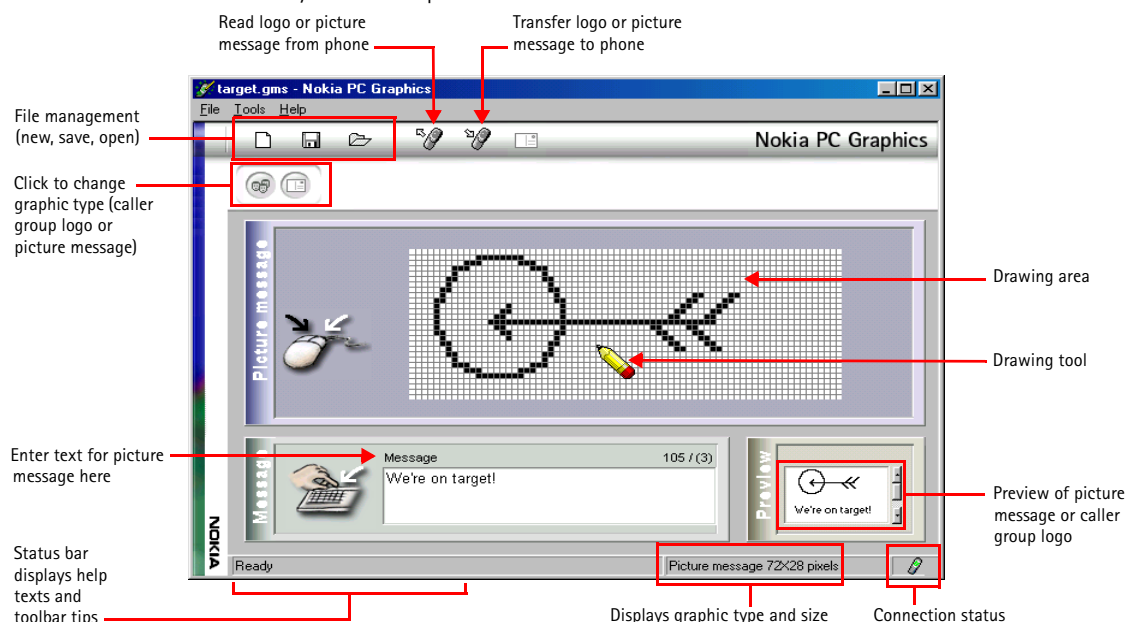
## 6 Nokia PC Graphics

Nokia PC Graphics is a program that allows you to create and edit picture messages, as well as graphics that can be used for picture messaging. You can also create and edit new caller group logos.

Once you create or modify a graphic, you can transfer it to your phone (IR or DLR-3P cable). You can also save your work to disk for use at another time, or to send via e-mail to friends and family who also use a compatible version of PC Suite.

### • TOUR OF PC GRAPHICS

The illustration below introduces you to PC Graphic's tools and commands:



6

### • CREATE A NEW GRAPHIC

Nokia PC Graphics provides you with easy to use drawing tools so you can create your own unique caller group logos or picture messages. Before you begin drawing, select the type of graphic you want to create.

**Important:** You do not need to establish a connection (IR or cable) between your phone and PC to create a new graphic. You only need to establish a connection when preparing to send the new logo or picture message to your phone.

#### Choose a picture type

- 1 Launch PC Graphics (click Start, point to Programs, point to Nokia PC Suite 4, then click PC Graphics).
- 2 Click Tools, point to Picture type, then click one of the following options:
  - Group logo - used to create new caller group logos
  - Picture message - used to create picture messages

If you select **Picture message**, use the Size option from the Tools menu to select the size of the picture used in the picture message.



**Tip:** Selecting the larger picture size reduces the number of characters that accompanies the picture message (maximum of 121 characters).

#### Draw a new picture

The type of picture you select determines the size and overall dimensions of the drawing area. The drawing area is divided into blocks that can be filled in to create the new picture.

Your cursor becomes a pencil that you can use to fill in each block. Use the left mouse button to fill each block with black. If you make a mistake, use the right mouse button to erase (or fill the block with white).



## Save a picture

PC Graphics allows you to save your work as a file on your PC's hard drive. Saving your logos and picture messages to your hard drive creates a backup copy of your work. You can also save your work, then open the file at a later time for further edits or to send the picture message or logo to your phone.




**Tip:** PC Graphics automatically selects the correct file type based on the picture type you selected. File types supported: Picture message files (\*.gms), OTA Bitmap Files (\*.otb), and Bitmap files (\*.bmp)

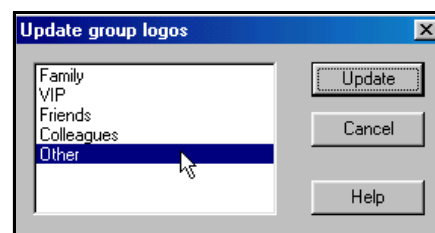
- 1 Click the **Save** button on the toolbar (or click **Save** on the **File** menu).
- 2 Select a location to save your work, then enter a name for your picture.
- 3 Click **Save** to complete the task.

## • TRANSFER A GRAPHIC TO YOUR PHONE


Once you create a new caller group logo or picture message on your PC, you can transfer the information to your phone using either IR or cable connection. Make sure you establish a connection between your PC and phone before you begin.

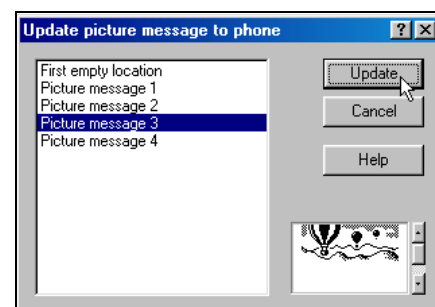
### Transfer a group logo to your phone


- 1 Click the **Update to phone** button  on the toolbar (or select the **Update to phone** command from the **Tools** menu).
- 2 Click the name of the caller group from the list of logos (example: **Other**). The logo you created replaces the existing logo for the selected caller group.
- 3 On your phone, press **Names**, scroll to **Caller groups**, then press **Select**.
- 4 Scroll to the caller group you selected in step 2 above, then press **Select**.
- 5 Scroll to **Group logo**, then press **Select**.
- 6 Scroll to **View**, then press **Select** to confirm the transfer of the logo to your phone.



### Transfer a picture message to your phone

- 1 Click the **Update to phone** button  on the toolbar (or select the **Update to phone** command from the **Tools** menu).
- 2 Click one of the existing picture message locations from the list (or select **First empty location**).  
The picture message you created in PC Graphics replaces the existing message in the location you selected. If you selected **First empty location**:
- 3 Press **Menu 01-6 (Messages > Archive)**, then press **Open**. The new picture message appears in your phone's **Archive** folder for sending at a later time.




 **Note:** For more information on saving pictures in your phone, please refer to your phone's user guide.

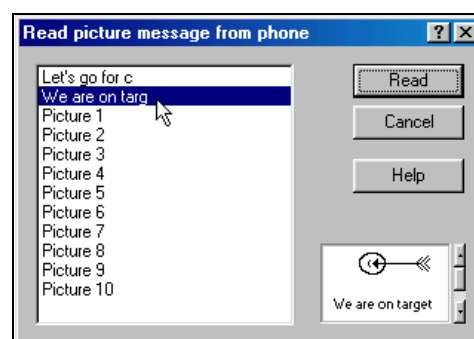
## • WORK WITH AN EXISTING GRAPHIC

PC Graphics allows you to edit any of the picture messages already in your phone. Or you can open and modify logos and picture messages that you've saved on your PC. Make sure you establish a connection between your PC and phone before you begin.

### Edit a picture message stored in your phone

With the Nokia PC Graphics application running:


- 1 Click **Tools**, point to **Picture type**, then click **Picture message**.
- 2 Click **OK** (as needed) to confirm any change in picture size required by Nokia PC Graphics.
- 3 Click the **Read from phone** button  (or select the **Read from phone** command from the **Tools** menu).
- 4 Select the picture message or picture you want to edit from the list, then click **Read**.



Once the picture message has been loaded into your PC from your phone, use the pencil tool to edit the image. Click the **Update to phone** button on the toolbar to transfer the picture back to your phone.

## Open a graphic you created

You may want to save picture messages or caller group logos on your PC so you can re-use them at a later time.

Click the **Open** button  on the toolbar (or select **Open** from the File menu) to locate a graphic you've saved. You can then edit the graphic (as necessary), transfer the graphic to your phone, or send it to another user via SMS.

## • OPEN OTHER BITMAP FILES

Nokia PC Graphics has the ability to open and convert Windows RGB-coded bitmap images for use with picture messaging and caller group logos.

Nokia PC Editor provides tools to select or "capture" the portion of the image you want to use, as well as for adjusting the image and converting it to black and white for use in your phone.

### NON-SUPPORTED FILE FORMATS


If the image you want to use is not Windows bitmap format (JPEG, GIF, etc.), you need to use another graphics application and convert the image to bitmap format.

## Capture an image

Because of the size and dimension requirements of picture messages and caller group logos, you may only be able to use a portion of your image. Using the cursor, you can outline or "capture" that portion of the image you want to use.

PC Graphics captures your image at the correct height and width, based on your selection of **Group logo** or **Picture message** from the **Tools** menu.

With the Nokia PC Graphics application running:

- 1 Click **Tools**, point to **Picture type**, then select the type of graphic you want to create (**Group logo** or **Picture message**).
- 2 Click **OK** (as needed) to confirm any change in picture size required by PC Graphics.
- 3 Click the **Open** button  on the toolbar (or select the **Open** command from the File menu).
- 4 Click the **File of type** drop-down arrow at the bottom of the **Open** dialog box, then click **Bitmap Files (\*.bmp)**.
- 5 Locate and select the image you want to use, then click **Open**.
- 6 Move the mouse pointer over the drawing area until the pointer changes to a cross-hair.
- 7 Click and hold the left mouse button, then drag your mouse to draw a rectangle around the area you want to capture.

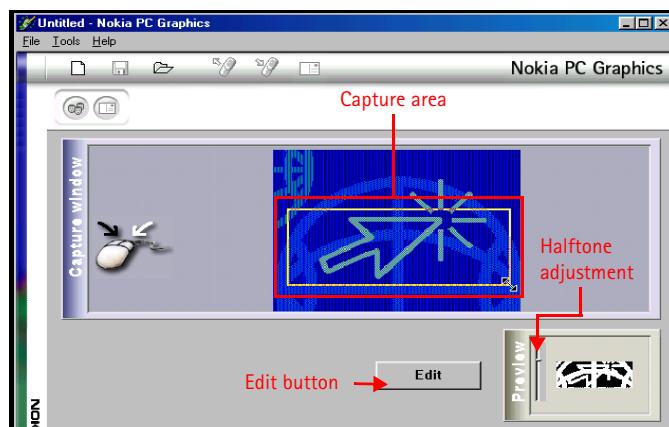


**Tip:** Once you define the capture area, you can still adjust the height and width using standard Windows resizing techniques. Move the cursor over the border of the capture area until the cursor shape changes, then drag to resize.

## Adjust and edit image

A half-tone (black and white) preview of your selection appears in the lower right corner of the PC Graphics window. Use the slider to adjust the image for clarity and quality, as well as how PC Graphics converts the color information to black and white.

Once you're satisfied with the quality of the captured image, click the **Edit** button. You can now make further edits to the image, or transfer the graphic to your phone.




## 7 Nokia Phone Editor

Nokia Phone Editor is a program that allows you to edit and manage various functions of your phone from the keyboard of your PC. Phone Editor consists of the following components:

- **Contacts** – used to manage phone book entries. Also used to store contact information on your PC
- **Profiles** – used to edit profile and caller group settings from your PC
- **Settings** – used to view and modify various system and message settings. Also used to store configure your personal business card information

### • BEFORE YOU BEGIN

Make sure you establish a connection between your phone and PC before using Phone Editor. If your phone is not connected to your PC, you cannot edit and manage your phone's information and settings.

 **Important:** Phone Editor cannot be used during active digital data or fax calls (and vice versa). Do not try to use these two features simultaneously.

### • PHONE MEMORY AND PC STORAGE LOCATIONS

Phone Editor uses your phone's memory and your PC (RAM memory and hard drive storage) to store your phone's data and settings:

Each time you launch Phone Editor, phone numbers, text messages and various phone settings are read into Phone Editor's memory. When you terminate the PC connection or exit the program, your phone's information is stored on your PC. The next time you use Phone Editor, the information stored on your PC is updated.


### • CHOOSE THE RIGHT APPLICATION FOR MANAGING CONTACTS

If you don't already use a PIM application like Microsoft Outlook or Lotus Organizer, Nokia Phone Editor's **Contacts** application is the perfect choice for editing and managing your contacts. Phone Editor creates a direct connection to your phone's memory and allows you to add or modify your phone book quickly and easily.

#### Nokia Phone Editor limitations

Nokia Phone Editor can only manage contacts with one number per name. However, your phone's memory is capable of storing multiple phone numbers and text fields (e-mail addresses, Web addresses, etc.) per entry.

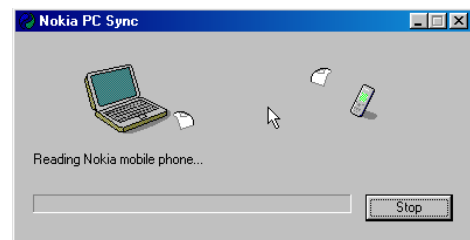
You cannot use Phone Editor to create or manage phone book entries with multiple names per number. Nor can you create or add text fields to any contacts you create in Phone Editor.

 **Note:** When more than one number per name exists, Phone Editor displays the **Mobile** or **General** number you stored. For more information on number types and assigning or modifying number types, please see your phone's user guide.

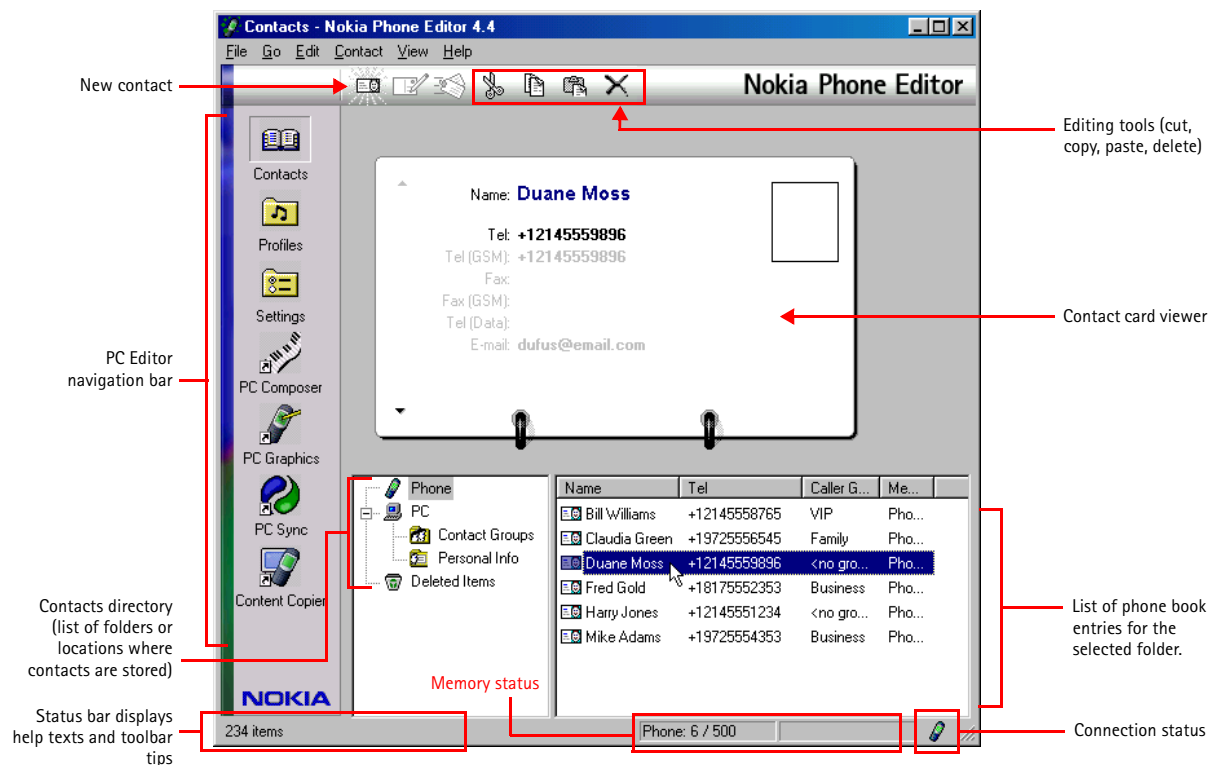
#### Use Nokia PC Sync

If you have multiple numbers and/or text fields per phone book entry you can still manage your phone book from your PC. This can be done easily by using a PIM application, along with Nokia PC Sync. For more information about Nokia PC Suite, please see page 13.

- 1 Launch your PIM application (example: Microsoft Outlook).
- 2 Locate the contact in your PIM that corresponds with the phone book entry you wish to edit (or create a new contact in your PIM).
- 3 Add or modify the contact information as necessary, then save your work.
- 4 Launch Nokia PC Sync and synchronize your PIM and phone.




## • TOUR NOKIA PHONE EDITOR AND CONTACTS WINDOW



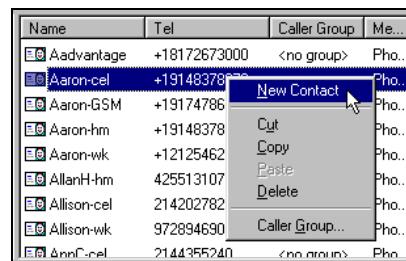
7

## • MANAGE CONTACTS USING PHONE EDITOR


Once you launch Nokia Phone Editor, click the **Phone** folder  in the contacts directory. A list of all phone book entries is displayed in the pane to the right of the contacts directory.

Many of the Phone Editor commands are available from the program's shortcut menu. Select a phone book entry to edit, then right-click to display a list of the menu options available from the shortcut menu. Select the command you wish to perform from the list.

You can also find the same commands in the program's **Contact** and **Edit** menus, or you can use the available toolbar buttons.




### Add a new contact

- 1 Click the **New Contact** button  on the toolbar (or select **New Contact** from the shortcut menu).
- 2 Enter the name of the new contact, then press **TAB**.
- 3 Enter the phone number, then press **ENTER** to save your work.


### EDIT CONTACT INFORMATION

- 1 Select the contact to edit from the list, then click the contact's name (or number) in the contact card viewer.
- 2 Make the necessary changes, then press **ENTER** to save your changes.





### Delete a contact

- Click the contact you want to delete from the list, then click the **Delete** button  on the toolbar. -OR-
- Right-click the contact you want to delete, then click **Delete** on the shortcut menu.

## Copy and move contacts

Your PC's hard drive offers you virtually unlimited storage space for names and numbers. You can copy phone book entries to the Phone Editor's PC folder  to back up your data. Or you can move entries to the PC folder, making more memory available for other entries.

To copy or move contacts:

- 1 Click the folder containing the contacts you want to copy or move (example: Phone .
- 2 Click the contact you wish to copy or move (or hold CTRL, then click to select multiple contacts).
- 3 Click the Copy button  to copy (or click the Cut button  to move).
- 4 Click the folder where you want the contacts stored (example: PC folder .

## Add a contact to a caller group

You can use Phone Editor to assign phone book entries to one of the available caller groups. If you are unfamiliar with the caller group feature, please see your phone's user guide.

- 1 Right-click the contact you wish to assign to a caller group, then click **Caller Group**.
- 2 Click the drop-down arrow, then click the desired caller group.
- 3 Click **OK** to change the caller group assignment.

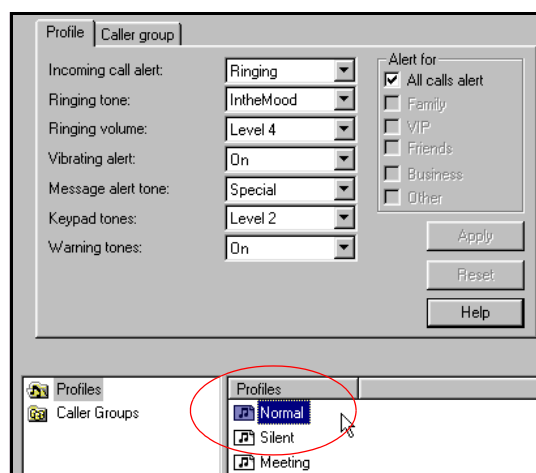
## • EDIT PROFILES AND CALLER GROUPS

You can use Nokia Phone Editor's **Profiles** application to view your profiles and caller groups settings at a glance. You can edit profile and caller group settings quickly and easily from your PC's keyboard.

### Edit a profile

- 1 Click the **Profiles** button on the Phone Editor's navigation bar.
- 2 Click the name of the profile you want to edit from the list.
- 3 Use the drop-down arrows to modify the various profile settings.
- 4 Click **Apply** to apply the changes you make to your phone's memory.

If you change the **Alert for** settings to one of the caller groups listed, your phone uses the profile you're editing to notify you of callers assigned to that caller group.



### RENAME THE SELECTED PROFILE

- 1 Click **Edit**, then click **Rename**.
- 2 Type the new name, then press **ENTER** to save your changes.

### Edit caller groups

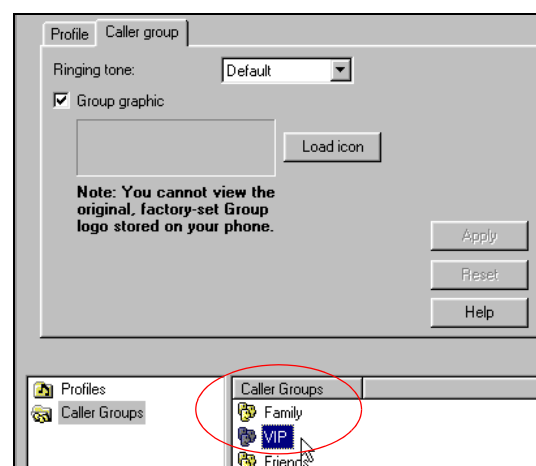
- 1 Click the **Caller group** tab (or click the **Caller Groups** folder).
- 2 Click the name of the caller group you want to edit from the list.
- 3 Use the drop-down arrow to select a new ringing tone for the selected caller group.

### ADD/CHANGE GROUP GRAPHIC

- 1 Click the **Location** button, then navigate to the location of the graphic you want to use.
- 2 Select the caller group logo file, then click **Open**.
- 3 Click **Apply** to send the updated settings to the phone.

### RENAME THE SELECTED CALLER GROUP

- 1 Click **Edit**, then click **Rename**.
- 2 Type the new name, then press **ENTER** to save your changes.



- **EDIT SETTINGS** 

You can use Nokia Phone Editor's **Settings** application to view and edit a variety of phone settings, as well as configure how Phone Editor handles items you delete. The **Settings** application divides all of the settings into three properties tabs, as described below:


- **General** - used to specify how you want Phone Editor to process deleted items
- **User** - used to edit and store your user information

- **LAUNCH OTHER PC SUITE APPLICATIONS**

The PC Editor navigation bar contains buttons that can be used to launch the other PC Suite applications. Use these buttons while in Phone Editor to launch **PC Composer**, **PC Graphics**, **PC Sync**, or **Content Copier**.


## 8 Wireless modem setup for Nokia 6360 phone

Your phone can function as a wireless modem when connected to your PC via IR or cable. Once your phone is installed and configured properly, your phone works in conjunction with your existing data software, allowing you to connect to a corporate network, the Internet, or check e-mail wherever you are.

-  **Important:** This feature is available only if your service provider's network supports circuit-switched data (CSD) digital data and fax services. A subscription to these services may also be necessary. Please check with your service provider prior to making or receiving digital data and fax calls.

### Your PC's hardware and virtual COM ports

Hardware resources between your computer's physical COM ports and the infrared (IR) port often times are shared. Windows creates "virtual" COM ports to accommodate connections between your computer and infrared devices. If your infrared port uses COM1, your phone should be assigned to COM4; if your infrared port uses COM2, your phone should be assigned to COM5.


-  **Important:** If you wish to connect your phone and PC using IR, make sure that your PC's IR port is functioning properly and that there are no device conflicts. Windows cannot detect your phone if the IR port is not functioning properly or conflicting with another device.

### • DOWNLOAD MODEM DRIVER

During the modem installation process, Windows looks for software specific to the new device being installed. The modem driver for your phone can be found in the 6360 product section of:

<http://www.nokia.com/us>

Since the **Add New Hardware Wizard** for *all* Windows operating systems searches the A:\ drive for device drivers first, Nokia recommends that you download this file and save it to a floppy diskette.


-  **Note:** If you choose to save the file to your hard drive, please make note of the path to the file as this information is required to complete the installation successfully. Depending on your operating system, locating this file on your hard drive may add additional steps to the installation process.

### Choose the correct file

The Nokia PC downloads Web site contains the modem driver file needed for your phone:

- `nok_tdma.inf`

This file is used when the connection method between your PC and phone is either the DLR-3P cable or IR.

-  **Important:** Windows 2000 Professional users: this file is necessary for cable installation only. If you wish to connect to your PC using IR, please see "Infrared and Windows 2000 Professional" on page 27 for more information on modem setup for your operating system.


### Multiple modem installations

To provide yourself with the option of using either the DLR-3P or infrared to make your connection, you must perform the modem installation process twice (once for each connection method).

Example: You have chosen IR as your connection method, yet you cannot find a flat work surface so you can align the IR ports of the two devices. You decide to connect using the DLR-3P cable instead. However, you cannot modify your existing IR modem configuration and change the serial connection to DLR-3P. To use the DLR-3P cable, you must already have an additional modem installation using the driver for the DLR-3P cable.

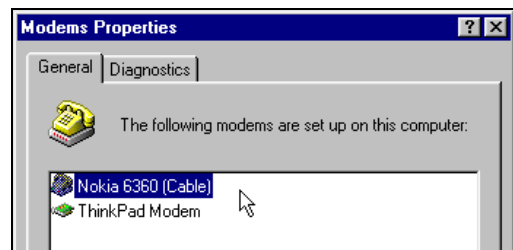
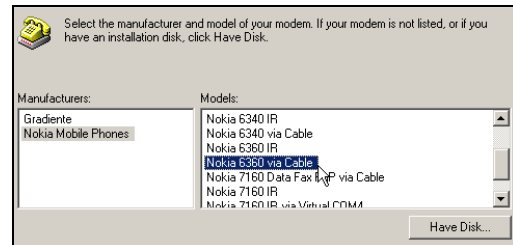
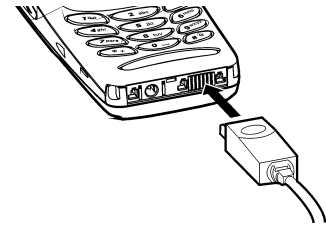
### • GETTING CONNECTED FOR THE FIRST TIME: DLR-3P CABLE (ALL WINDOWS VERSIONS)

- 1 Connect the DLR-3P cable to the serial port on the back of your laptop or desktop computer.

-  **Note:** If you are using a serial mouse, you need to purchase a RS232-to-PS/2 adapter and move your mouse to an existing PS/2 port, or purchase a PS/2 mouse. Check with your local computer dealer for these accessories.

- 2 Connect the DLR-3P cable to your Nokia phone. Your phone displays a message indicating you have connected the data cable successfully, then returns to the Start screen.
- 3 Click **Start**, point to **Settings**, then click **Control Panel**.
- 4 Double click the **Modems** or **Phone and Modem Options** control panel icon.
- 5 Click **Add**. (Windows 2000 users, please click the **Modems** tab, then click **Add**).
- 6 Select the **Do not detect my modem...** option, then click **Next**.
- 7 Click **Other** if asked about a PCMCIA modem (this screen may not appear on all systems), then click **Next**.
- 8 Insert the floppy diskette containing the .inf file in your drive now. Click the **Have Disk** button. Confirm that **A:\** is the location of the nok\_tdma.inf file, then click **OK**.
- 9 Select **Nokia 6360 via Cable** from the list of available choices, then click **Next**.
- 10 Select the COM port where the cable is attached (typically COM1), then click **Next**.
- 11 The Wizard indicates it has located the correct software for your phone. Click **Finish** when Windows informs you that it has installed the device successfully.
- 12 Verify that your Nokia phone connected using the DLR-3P cable appears in the list of modems.

Complete the process by configuring your data software to work with the new infrared modem configuration. For more information, refer to "Configure your data and fax software" on page 29.



8

## • GETTING CONNECTED FOR THE FIRST TIME USING IR (WINDOWS 95, 98, AND ME)

Before you can make or receive digital data and fax calls, you must do the following:

- 1 Establish an infrared connection between your PC and your phone.
- 2 Install your phone as a wireless modem connected via infrared.
- 3 Configure your data software to use your phone as the active modem for data and fax calls.

### Establish an infrared connection

The preferable distance between the two devices making an infrared connection is a range of three inches (7.5 cm) to three feet (.9 m) maximum. There must be no obstructions between the two devices, and the IR ports of the two devices must be pointing at each other.

### ENABLE INFRARED COMMUNICATIONS ON YOUR PC AND PHONE

- 1 Double-click the **Infrared** icon in the **Control Panel** (Windows 95 and 98 only). Windows ME users, please go to step 4).

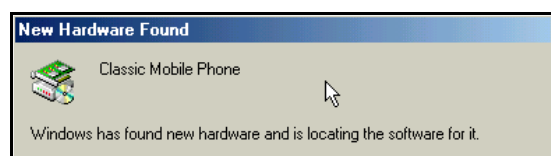
If this icon does not appear in the Control Panel, see "Install infrared support for Windows 95" on page 28.



**Tip:** Windows 98 users can also launch the Infrared Monitor by double-clicking the **Infrared Monitor** icon in the system tray.



- 2 Click the **Options** tab, then select **Enable infrared communication**. Verify that the install software option for Plug and Play devices is selected.
- 3 Click **Apply**, then click the **Status** tab.
- 4 On your phone, press **Menu**, scroll to **Infrared**, then press **Select**.
- 5 Align the infrared ports of both devices.
- 6 When a successful infrared connection has been made, the infrared monitor indicates that your phone has been found.



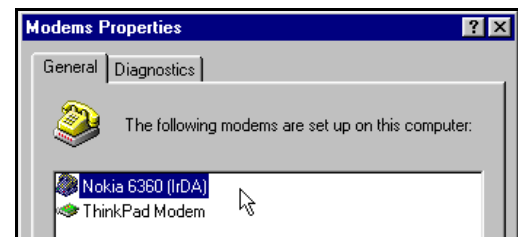
## Modem installation

The Windows **Add New Hardware Wizard** launches immediately after the infrared monitor displays the connection status between phone and PC.

To complete modem installation:

- 1 Insert the floppy diskette containing the modem driver file when the **Add New Hardware Wizard** screen appears.
- 2 Click **Next** as necessary until Windows asks you for the location of the modem driver file.
- 3 Select **A:\** or the floppy drive option (as necessary), then click **Next**.
- 4 The Wizard indicates it has located the correct software for your phone. Click **Next** to finalize the installation.
- 5 Click **Finish** when Windows informs you that it has installed the device successfully.
- 6 Verify that your Nokia phone connected via infrared appears in the list of modems.

Complete the process by configuring your data software to work with the new infrared modem configuration. For more information, refer to "Configure your data and fax software" on page 29.



8

## • INFRARED AND WINDOWS 2000 PROFESSIONAL

Microsoft redesigned its implementation of infrared services with the release of Windows 2000 Professional. To make an IR serial connection between IR-equipped Nokia phones and IR-equipped PCs running Windows 2000, you must download and install the following Microsoft software update: [Security Update, August 19, 2001](#)

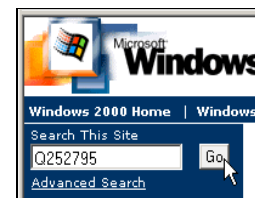
### Learn about Windows 2000 SRP1

Microsoft recently released the [Windows 2000 Security Rollup Package 1](#) that provides a cumulative package of security updates offered since the release of Windows 2000 Service Pack 2 (SP2). Although the [Security Update, August 19, 2001](#) software appears to be incorporated into SRP1, Nokia has determined that the [Security Update, August 19, 2001](#) software is still required in addition to SRP1.

### Locate Security Update, August 19, 2001

To locate the necessary software:

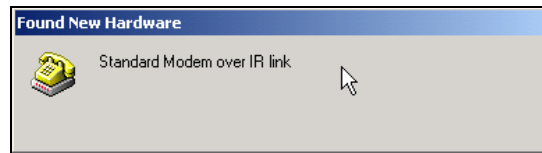
- 1 Point your Web browser to: <http://www.microsoft.com/windows2000/downloads/>
- 2 Using the site's search utility, locate the Microsoft Knowledge Base article: **Q252795**.
- 3 Click the link to access [Security Update, August 19, 2001](#), located in the list of search results.
- 4 Follow the instructions for downloading the software to your PC's hard drive.



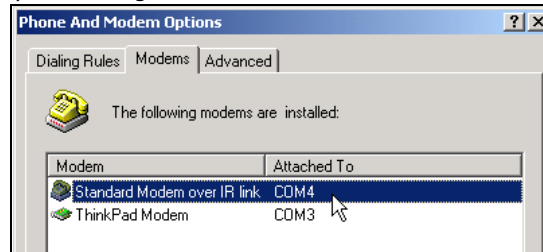
## • WINDOWS 2000 MODEM SETUP INSTRUCTIONS

- 1 Install the security update from Microsoft's web site, then reboot your PC.
- 2 Enable IR communications on your phone (for more information on enabling IR on your phone, please refer to your phone's user guide).
- 3 Align the infrared ports of your phone and PC.

When a successful infrared connection has been made, the infrared monitor indicates your phone has been found. Windows 2000 installs your Nokia phone as **Standard Modem over IR link**.



Confirm successful installation of your phone via the **Phone and Modem Options** Control Panel. Use this new device with your data application (example: **Dial-up Networking**).



## • GETTING CONNECTED FOR THE FIRST TIME: IR (WINDOWS XP HOME AND PROFESSIONAL)

Wireless modem support using IR with Windows XP is similar to that of Windows 2000 with the security update applied. To install your phone as a wireless modem using infrared, please see "Infrared and Windows 2000 Professional" on page 27, but begin with step #2.

8

## • IR AND WINDOWS NT WORKSTATION 4.0

Microsoft does not support infrared for Windows NT Workstation 4.0. However, the manufacturer of your laptop or desktop PC may offer their own support of IR for Windows NT. Check with the manufacturer of your hardware for more information.


## • INSTALL INFRARED SUPPORT FOR WINDOWS 95

If you have the first releases of Windows 95, you may not have the most recent files to support infrared. You may need to download the Windows 95 Infrared Support version 2.0. This software can be found in the software download section of Microsoft's web site:

<http://www.microsoft.com>

### TO DETERMINE WHETHER YOU HAVE THE MOST RECENT WINDOWS 95 INFRARED SUPPORT SOFTWARE:

- 1 Double-click **Add/remove programs** in the Control Panel.
- 2 Scroll through the list of installed applications to find **Infrared Support for Windows 95 version 2.0**.
- 3 If this software is not listed, proceed to Microsoft's web site. Download and install the necessary files (w95ir.exe).

 **Note:** For more information on installation and configuration of **Infrared Support for Windows 95 version 2.0**, please refer to the Readme files that accompany the update software.

## 9 Configure your data and fax software

Before you can use your phone to send and receive digital data and fax calls, you must configure your data software so that it uses your phone rather than your existing modem. You may consider creating a separate set of dialing properties to use when your phone is connected to your computer, rather than changing any existing settings.

The following pages are designed to help you configure some of the more popular applications to be used with your Nokia phone

### • OBSERVE THE FOLLOWING BEFORE MAKING OR RECEIVING DIGITAL DATA OR FAX CALLS

- You must subscribe to digital data and fax services with your service provider.
- Your phone must be powered up, and you must be in a digital network. Do not switch the phone on when wireless phone use is prohibited or when it may cause interference or danger.
- Your PC's infrared port must be configured properly (internal or external port).
- You must establish a connection between your PC and your phone.
- Your data software must be running and configured to recognize your Nokia phone as the active modem.

### • CONFIGURE YOUR DATA SOFTWARE

Before you can use your phone as a wireless modem, you must configure your data software so that it uses your phone as the active modem (rather than your existing modem). The following pages are designed to help you configure some of the more popular applications for digital data and fax calls.

### • USE MICROSOFT DIAL-UP NETWORKING

You may be using Microsoft's Dial-up Networking feature to connect to your Internet service provider, or to make a remote connection to your corporate network (including corporate e-mail server using Microsoft Outlook, or Lotus cc:Mail).

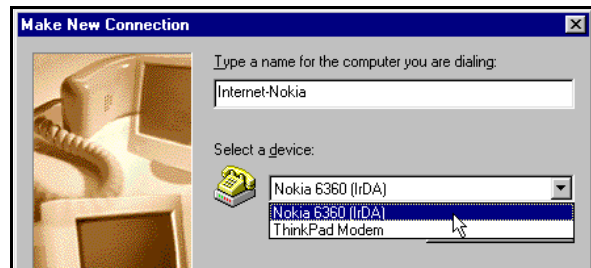
Rather than altering the existing configurations you use when dialing with your existing modem, consider creating a new connection exclusively for use with your Nokia phone (as detailed below).


#### GATHER CONFIGURATION INFORMATION

You need the phone number for your Internet service provider or for your company's remote access server. When testing the new connection, you also need your user name and password.

#### Create a new connection

- 1 Double-click the **My Computer** icon, then double-click the **Dial-up Networking** folder (Windows 2000 and Windows ME users: Click **Start**, point to **Settings**, then click **Dial-up Networking**).
- 2 Double-click the **Make New Connection** icon.
- 3 Type a name for your new connection (example: **Internet-Nokia phone**).
- 4 Click the drop-down arrow and select your Nokia phone as the modem to use, then click **Next**.
- 5 Enter the area code, telephone number, and country code (if necessary), then click **Next**.
- 6 Click **Finish** to save the new configuration in your Dial-up Networking folder.
- 7 Make sure to configure any necessary network parameters for this connection prior to dialing (IP address of DNS or WINS, etc.).




 **Note:** For more information on configuring your network connection, please consult your Internet service provider or your company's help desk.


#### Connect to the network

Make sure you establish a connection between your phone and PC (using the DLR-3P cable or IR) before making a digital data call.


- 1 Double-click the new connection (example: **Internet-Nokia phone**).

- 2 Enter your user name and password, then click **Connect**.
- 3 Your phone displays **Connecting...** while establishing a connection. Once a successful connection has been made, **Data call** appears on the phone's screen.

 **Note:** Your Windows operating system displays its normal series of messages while the connection is being established and verified.

 **Note:** Your wireless service provider must support digital data for this feature to work. Contact your service provider to verify that this service is available in your area.


### Notes about data calls

- Do not terminate digital data/fax calls by pressing your phone's  key. This action may cause your data application to lock up temporarily and could cause loss of data.
- Data calls cannot be initiated using your phone's keypad. All data calls must be initiated using the data software.
- Any touch tones (DTMF tones) needed for calling cards, special long-distance access numbers, etc. must be programmed into the dialing string.

## • OTHER DATA APPLICATIONS

There are several other types of telecommunications applications that can be used with your Nokia phone and your computer. Some of these include:

- **Terminal Programs** – used to connect to BBS services (bulletin board system) and mainframe or mini-mainframe computers. Quarterdeck's Procomm Plus, Microsoft HyperTerminal, Microsoft Works (Communications Module), R-Link, and P-Term are just a few examples of this type of program.
- **Remote Administration** – used to remotely access your home or office computer for file sharing or remote control. Symantec's PCAnywhere, McAfee's Remote Desktop and Reach Out, Farallon's Timbuktu, Claris' Apple Remote Access, and Attachmate's EXTRA! are a few examples of this type of program.
- **On-line Services** – used to access the Internet, or discussion and information forums within the service. On-line services provide their own proprietary software interface for accessing their service. *America Online*, *CompuServe*, *MSN (Microsoft Network)*, and *Prodigy* are just a few on-line service providers that use their own proprietary software.

 **Important:** These examples are provided for your information only. Nokia does not endorse or provide support for any of the above applications or services.

### REMINDERS!

Before you can use your Nokia phone with ANY data program, you must first do the following:

- Establish a connection between your phone and PC using either IR or the DLR-3P cable.
- Use the data program's setup menu to set your Nokia phone as the active modem. Consult the program's User Guide or Help menu for more information.
- Review the information, "Requirements for digital data and fax calls" on page 1.

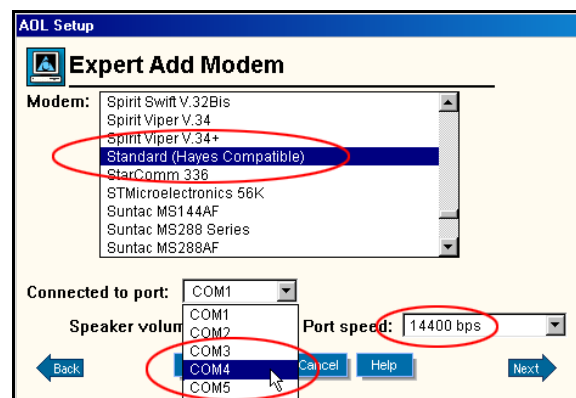
## • FOR AMERICA ONLINE (AOL) USERS

Your America Online software can be configured to use your Nokia phone as a wireless modem.

### MODEM SETUP

To add your Nokia phone as a new modem to AOL's connection setup:

- 1 From the **Sign On** screen, click **SETUP**.
- 2 Click **Expert Setup**, then click the **Devices** tab.
- 3 Click the **Expert Add** button.
- 4 Verify that **Modem (telephone line connection)** is selected as the type of connection device you want to add, then click **Next**.
- 5 Select the generic modem option (example: **Standard (Hayes Compatible)**) from the list of modems.



- 6 Select the COM port assigned to your PC's infrared COM port, or the hardware COM port where the DLR-3P is connected.
- 7 Set the port speed to 14400 bps, then click OK.

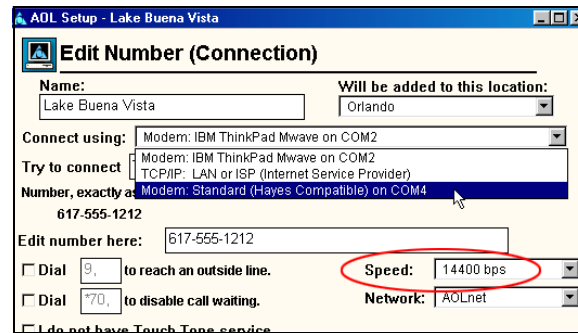
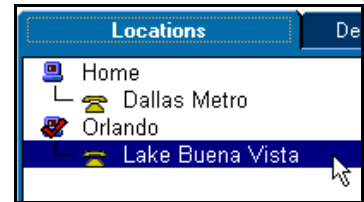
## Modify "Locations"

Now that your Nokia phone is configured for use by the AOL software, you need to modify your Locations settings to use your Nokia phone as the active modem.

### LOCATIONS SETUP

To modify an existing location:

- 1 From the Connection Setup screen, click the Locations tab.
- 2 Double-click the number for the location you wish to use with your Nokia phone.
- 3 Click the Connect using drop-down arrow, then click **Modem: Standard (Hayes compatible) on COMnn** (where nn is COM port for your PC).




- 4 Click the Speed drop-down arrow, then click 1400 bps.
- 5 Click OK to confirm your changes, then click Close to return to the Sign On screen.

## • CONFIGURING YOUR FAX SOFTWARE

Before you can use your phone to send and receive fax calls, you must configure your fax software so that it uses your phone as the active modem (rather than your existing modem).

Many of the most popular fax programs should support multiple modems connected to a PC or laptop computer, including Symantec *WinFax Pro*, Smith Micro Software *HotFax (version 3.02 or newer)*, Castelle *FaxPress*, etc.

 **Note:** Data or fax calls using your Nokia phone are possible only if your service provider supports digital data and fax service. You may be required to subscribe to these services. Check with your service provider before attempting to send or receive faxes.

## Select the correct modem

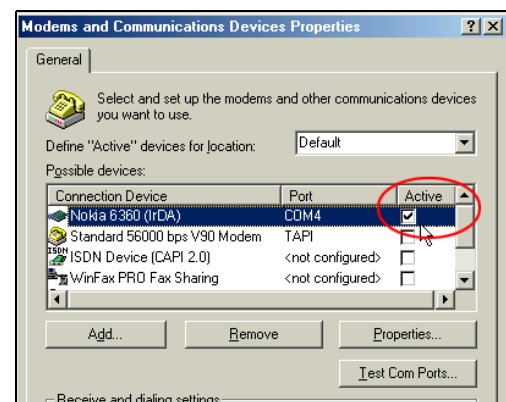
Each fax application typically has a setup menu that can be used to alter the settings for your modem, as well as define how and when calls are to be received (for example: immediately, on the third ring, etc.). This menu may also provide you with a list of available modems that you can use when sending and receiving fax calls.

Use your fax program's settings menu to select your Nokia phone as the active fax modem.

## Hardware setup

Use the modem properties dialog box of your fax software to confirm the following settings:

- Communications port - COMn (where n= the COM port number assigned to your phone)
- Initialization - 19200 bps
- Modem type - Class 2.0
- Flow control - Hardware



## 10 Connect to PalmOS devices

**Important:** The following instructions are based on Palm OS (operating system) software 3.3 and those devices that can run this version of the operating system (or newer versions). For more information, please visit:

<http://www.palmos.com/>

### • LEARN ABOUT YOUR PHONE AS A WIRELESS MODEM

It is possible to make a serial connection between your phone and your PalmOS device and use it as a wireless modem to perform HotSync operations with your PC.

In addition, third-party software is also available that allows you to browse the Web, send and receive faxes, and send or receive e-mail directly to your PalmOS device. Check your owners manual or the PalmOS web site for more information on third-party software.

**Important:** To access the Internet, you must have an existing dial-up account with a full-service Internet provider or dial-up access to a corporate network. Connection to on-line services such as CompuServe or Prodigy are not available at this time.

**Note:** America Online provides a software program that allows you to check your AOL E-mail from your handheld device. For more information, type AOL keyword: **PDA**.

### • CONNECTION OPTIONS

You can create a connection between your PalmOS device and your phone using either the DLR-3P cable or IR.

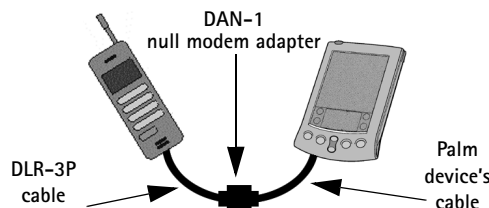
#### DLR-3P cable connection

Most PalmOS devices come with a serial cable used to connect your device with a desktop PC or laptop computer. This cable has either a USB male or an RS-232C female connection at one end and a special connector that plugs into the handheld device (either directly or via a docking cradle).

- If your PalmOS device's serial cable has the standard RS-232C connector, you need only the DAN-1 (null modem adapter with RS-232C connectors on each end) supplied in the DLR-3P accessory sales package.
- If your PalmOS device's serial cable has a USB connector, you need to purchase an additional serial cable with the standard RS-232C connector. The manufacturer of your PalmOS device sells this cable as an accessory. You also need the DAN-1 (null modem adapter with RS-232C connectors on each end) supplied in this sales package.

#### DAN-1

This adapter is used to join your device's serial cable to the DLR-3P cable (as shown in the figure below).



**Note:** Macintosh PalmOS device users do not need to use the RS232 - DB9 adapter.

**Important:** If you are unable to order the RS-232C serial cable as an accessory, you may be able to purchase a USB-to-RS-232C adapter. This device may be available at your local computer retailer, or via the Internet. Or you may consider using IR as your connection method.

#### IR (infrared) connection

Your PalmOS device should be equipped with an infrared port. You may find it more convenient to connect your phone and PalmOS device using IR, especially if you prefer to leave your serial cable or docking cradle attached to your PC.

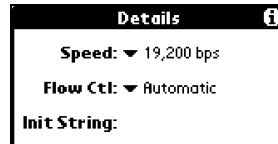
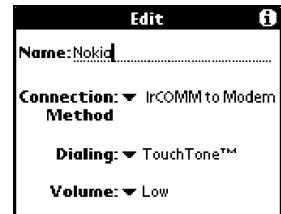
Before dialing, make sure you enable infrared communications on your PalmOS device, then align the IR ports of the 2 devices. The preferable distance between the two devices in an infrared connection is a range of three inches to three feet maximum. There must be no obstructions between the two devices and the IR ports of the two devices have to be pointing at each other.

Your Nokia phone is a Class 1 Laser Product.

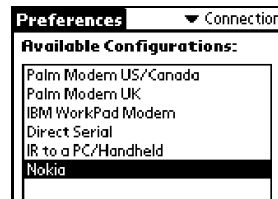
## • CONNECTIONS PREFERENCES

Before you can make data calls using your PalmOS device and your Nokia phone as a wireless modem, you need to create a new connection device in the **Connections** preferences folder.

- 1 Tap the **Applications** icon, then tap **Prefs**.
- 2 Tap the **Categories** drop-down menu, then tap **Connection**.
- 3 Tap **New**. Enter the name of the new connection device (example: **Nokia**).
- 4 Click the **Connection Method** drop-down arrow, then click either **Serial to Modem** (for DLR-3P connection) or **IrCOMM to Modem** (for IR connection).
- 5 Click **Details**. Set speed to **19,200 bps** and flow control to **Automatic**. Click **OK** when finished, then click **OK** to close the **Edit** window.



- 6 Your new Nokia phone configuration should now appear in the list of **Connection** options, and is available to all applications that support a modem connection.



## • MAKE A DIAL-UP CONNECTION

Once you have a modem configuration for your Nokia phone, you can use that configuration with any existing TCP/IP or network preferences, as well as any stand-alone 3rd party E-mail, Web browser, or fax programs.

### Data connection

Once your Nokia phone is configured as a wireless modem for use with your PalmOS device, you need to modify your existing Windows RAS configuration to use your phone as the active modem.

- 1 Tap the **Applications** icon, then tap **Prefs**.
- 2 Tap the **Categories** drop-down menu, then tap **Network**.
- 3 Tap the **Services** drop-down arrow, then tap **Windows RAS**.
- 4 Tap the **Connection** drop-down arrow, then tap the name of the connection device (example: **Nokia**).

Your existing **Windows RAS** connection is now configured to dial using your Nokia phone as a wireless modem.

### Before you make a digital data call

Before initiating the data call from your PalmOS device, make sure you enable infrared communications on your phone, then align the infrared ports of the two devices. If you are using the DLR-3P for the connection, make sure the cable is connected properly to both the phone and your computer's COM port.

Please also see "Requirements for digital data and fax calls" on page 1.


# 11 Connect to Microsoft PocketPC devices


## • LEARN ABOUT YOUR PHONE AS A WIRELESS MODEM

You can use your Nokia phone as a wireless modem with Pocket PC devices, then use these devices to check e-mail or browse the Web.

You may also be able to send and receive faxes from your Pocket PC device. However, this may require additional software from another manufacturer. Check your device's user guide, Web site, or the Microsoft Pocket PC Web site for more information on available software:

<http://www.microsoft.com/mobile>

 **Important:** To access the Internet, you must have an existing dial-up account with a full-service Internet provider or dial-up access to a corporate network. Connection to online services such as CompuServe and Prodigy is not available at this time.

 **Note:** America Online offers a software program that allows you to check your AOL e-mail from your handheld device. For more information, go to keyword: **PDA**.

## • CONNECTION OPTIONS

You can create a connection between your PocketPC device and your phone using either the DLR-3P cable or IR.

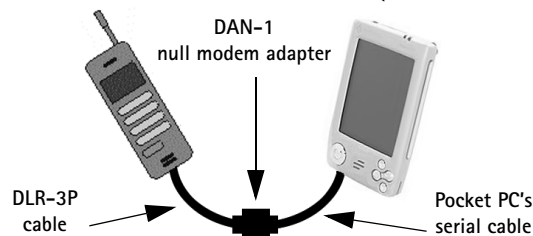
### DLR-3P cable connection


Most PocketPC devices come with a serial cable used to connect your device with a desktop PC or laptop computer. This cable has either a USB male connection or an RS-232C female connection at one end, and a special connector that plugs into the handheld device (either directly or via a docking cradle).

- If your PocketPC device's serial cable has the standard RS-232C connector, you need only the DAN-1 (null modem adapter with RS-232C connectors on each end) supplied in the DLR-3P accessory sales package.
- If your PocketPC device's serial cable has a USB connector, you need to purchase an additional serial cable with the standard RS-232C connector. The manufacturer of your PocketPC device sells this cable as an accessory. You also need the DAN-1 (null modem adapter with RS-232C connectors on each end) supplied in this sales package.

#### DAN-1

This adapter is used to join your device's serial cable to the DLR-3P cable (as shown in the figure below).



 **Important:** If you are unable to order the RS-232C serial cable as an accessory, you may be able to purchase a USB-to-RS-232C adapter. This device may be available at your local computer retailer, or via the Internet. Or you may consider using IR as your connection method.

### IR (infrared) connection


Your PocketPC device should be equipped with an infrared port. You may find it more convenient to connect your phone and PocketPC device using IR, especially if you prefer to leave your serial cable or docking cradle attached to your PC.

Before dialing, make sure you enable infrared communications on your PocketPC device, then align the IR ports of the 2 devices. The preferable distance between the two devices in an infrared connection is a range of three inches to three feet maximum. There must be no obstructions between the two devices and the IR ports of the two devices have to be pointing at each other.

Your Nokia phone is a Class 1 Laser Product.


## • CONFIGURE A MODEM CONNECTION

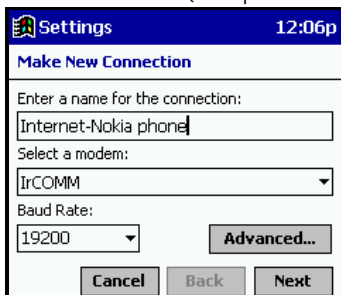
The procedure for creating a new modem connection for use with your Nokia phone is similar to that found in the various Windows desktop operating systems. However, before you can configure your PocketPC for a digital data call, you need to obtain the required setup information from your ISP or corporate network's Helpdesk.

 **Important:** You may need to first disable your Pocket PC's option that automatically begins synchronization when an infrared connection is detected. For more information on this task, please consult your device's user guide.

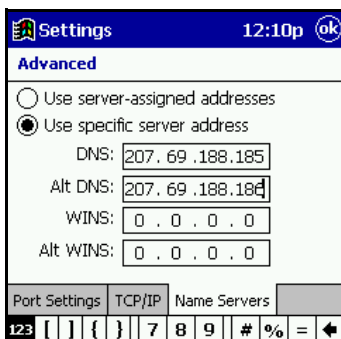
### Creating a modem connection

To create a new modem connection to your Internet service provider or corporate network:

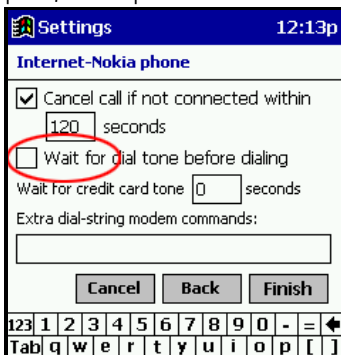
- 1 Tap the **Start** icon  , then tap **Settings**.
- 2 Tap the **Connections** tab, then tap **Modem**.
- 3 Tap **New Connection**, then enter a name for the connection (example: **Internet-Nokia phone**).



- 4 Click the modem selection drop-down arrow, then select the IrCOMM or Generic IrDA option for IR connections, or select Hayes Compatible on COM1 when using the DLR-3P for the connection.
- 5 Tap **Advanced** to access additional configuration properties for **Port Settings**, **TCP/IP**, and **Name Servers** (if required by your corporate network or ISP).



- 6 Tap **OK** to close the **Advanced** properties window, then tap **Next**.
- 7 Enter the area code (if necessary) and phone number, then click **Next**.
- 8 Tap **Wait for dialtone** to deselect this option, then tap **Finish**.




Your new dialing configuration is now visible in the **Modem Connections** list.

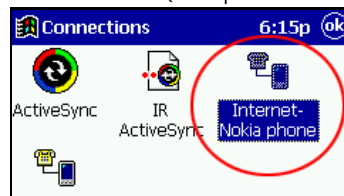
You may need to click the **Dialing** tab and modify the way Pocket PC dials local, long distance, and international numbers. For more information on dialing patterns, consult your handheld device's documentation.



### Use your new modem connection

To connect to your Internet service provider or corporate network:


- 1 Tap the **Start** icon , then tap **Programs**.
- 2 Tap **Connections**, then tap your new modem connection (example: **Internet-Nokia phone**).



- 3 Enter your user name, password, and domain (if necessary).



- 4 Click **Connect**. When you have successfully logged on to the network, the Pocket PC's status screen will show the message **Device Connected**.
- 5 Launch your browser or e-mail application.

 **Note:** For information on how to configure the Pocket PC Web browser or e-mail software, please consult your device's documentation.

### Before you make a digital data call

Before initiating the data call from your Pocket PC device, make sure you enable infrared communications on your phone, then align the infrared ports of the two devices. If you are using the DLR-3P for the connection, make sure the cable is connected properly to both the phone and your computer's COM port.

Please also see "Requirements for digital data and fax calls" on page 1.

## 12 Index

### A

- Abbreviations 2
- About MIDI files 11
- Add contact to caller group 23
- Add new contact 22
- Add New Hardware Wizard 27
- AOL
  - CSD modem setup 30
- Applications
  - compatible 1

### C

- Caller group logos 18
- Caller groups
  - add contact 23
  - add/change group graphic 23
  - edit 23
  - rename 23
- Change note duration 9
- Change ringing tone pitch 9
- Changing connection type 6
- Changing PIM applications 15
- Communications
  - distance between devices 2, 32, 34
  - enable IR 2
  - infrared 2
  - interruptions to IR 2
- Compatible applications 1
- Compose a ringing tone 9
- Configure data software 29
- Configure fax software 31
- Configure PC Sync 13
- Connect to a network/Internet 29
- Connect to Palm devices 32
- Connection Manager 6
- Connection preferences (Palm) 33
- Connection to PocketPC devices 34
- Contacts
  - custom contact lists 15
  - deleting-settings 14
- Content Copier 5
  - basics 5
  - compatible phones 5
  - log 7
  - saving data 6
  - source phone 6
  - target phone 6
  - unsupported phones 7
- Copy contacts 23
- Copy data to target phone 6
- Create a new connection 29
- CSD
  - AOL settings 30
  - dial-up connection for PalmOS 33
  - modem setup (PocketPC OS) 35
- Custom contact list 15

### D

- Data applicatons 30
- Data call
  - configure data software 26, 27
  - establish IR connection 26
  - modem installation 27
- Data call notes 30
- Delete contact 22

- Delete notes and rests 9
- Deleting contacts-settings 14
- Dial-up connection
  - PalmOS 33
- Dial-up Networking 29
- Digital data
  - before you begin 29
- Digital data call reminders 30
- Digital data call requirements 1
- Download modem driver 25

### E

- Edit a ringing tone
  - basics 9
  - delete notes/rests 9
  - save 10
- Edit caller groups 23
- Edit graphic
  - bitmap files 20
  - created with PC Graphics 20
- Edit Profiles 23
- Edit ringing tone
  - change duration 9
  - change note duration 9
  - change pitch 9
- Edit settings 24

### F

- Fax
  - configuring software 31
  - modem selection 31
- File formats
  - not supported 20
  - supported 20

### G

- GPRS
  - dial-up connection for PalmOS 33

### H

- Half-tone adjustment 20
- Hardware setup
  - PC Composer 8

### I

- Ignore contact deletions 14
- Infrared 2
- Installation
  - change language of installation 4
  - language selection 3
  - note to Windows ME users 3
  - PC Suite 3
  - uninstall PC Suite 4
- Introduction 1
- IR 2
  - enable IR on PC 26
  - establishing a connection 26
  - virtual COM ports 25
  - Windows 2000 update 27
  - Windows NT Workstation 4.0 28
- IR and Windows 95 28
- IR port
  - hardware conflicts 25

**M**

- Modem driver 25
  - download 25
- Modem installation 27
  - Windows 2000 27
- Modem setup 25
  - configure data software 29
  - Dial-up Networking 29
  - Palm 33
  - PocketPC (CSD) 35
- Move contacts 23

**N**

- New contact list
  - Lotus Organizer 16
  - Other 16
  - Outlook 15
- New graphic
  - creating 18
  - saving 19
  - transfer to phone 19
- New modem connection 29
- New Synchronization 15
- Nokia Modem Setup (Windows 2000) 27
- Note capacity 9
  - ringing tone 9
- Notes on data calls 30
- NT Workstation 4.0 28
- NT Workstation 4.0 and Infrared 28

**O**

- Open Standard MIDI file 11
- Other data applications 30

**P**

- Palm(tm) connectivity 32
- PC 2
- PC Composer 8
  - launching 8
  - overview of window 8
- PC Suite
  - Content Copier 5
  - featured components 3
  - installation 3
  - PC Composer 8
  - PC Sync 13
- PC Sync 13
  - automatic startup 15
  - basics 14
  - changing PIM applications 15
  - exit application 14
  - New Synchronization 15
  - options 15
  - starting application 14
  - supported PIMs 13
  - synchronize for the first time 14
  - task bar icon 14
- PC Sync configuration
  - calendar and contacts 13
  - general 13
  - PIM properties 14
  - resolving conflicts 13
- Phone Editor
  - add/delete contacts 22
  - change group graphic 23
  - Contacts window 22

- edit caller groups 23
- edit profiles 23
- limitations 21
- managing contacts 22
- rename caller groups 23
- Picture messages 18
- PIM 2
- PocketPC
  - CSD data call 36
  - modem setup 34
- PocketPC OS
  - modem setup (CSD) 35
- Prerequisites
  - digital data/fax calls 29
- Profiles
  - edit 23

**R**

- Rename caller groups 23
- Requirements
  - digital data calls 1
  - system 1
- Resolving synchronization conflicts 13
- Ringing tone
  - edit 9
  - PC Composer 8
  - playback 9
- ringing tone 9
- Ringing tones
  - from MIDI files 11
- RTTTL
  - Using with PC Composer 12

**S**

- Safety notes 2
- Save new ringing tone 10
- Saving phone data 6
- Send ringing tone options 10
- Sending ringing tone to phone 10
- Settings
  - edit 24
- Sound card setup 8
- Source phone 6
- Standard MIDI File
  - edit 12
- Standard MIDI file
  - open 11
  - save 12
- Standard MIDI files (about) 11
- subset of phone book 15
- Synchronization conflicts 13
- System requirements 1

**T**

- Target phone 6
- Time-out 2
- Types of data applications 30

**U**

- Using PocketPC modem connection (CSD) 36

**W**

- Windows 2000 Infrared 27
- Windows 95 IR support 28
- Windows ME installation note 3
- Windows XP
  - DLR-3P 25
  - IR 28

Wireless modem  
  make a data call (CSD) 36  
  overview (PalmOS) 32  
  overview (PocketPC OS) 34  
Wireless modem installation 27  
Wireless modem setup 25