

Installation instructions for firmware update for DVD drives – to support correct ejection of DVD-RAM2 media

This firmware update does not make the drives listed below compatible with DVD-RAM2 media, but it does allow these drives to safely and reliably eject a DVD-RAM2 disc if one is inserted.

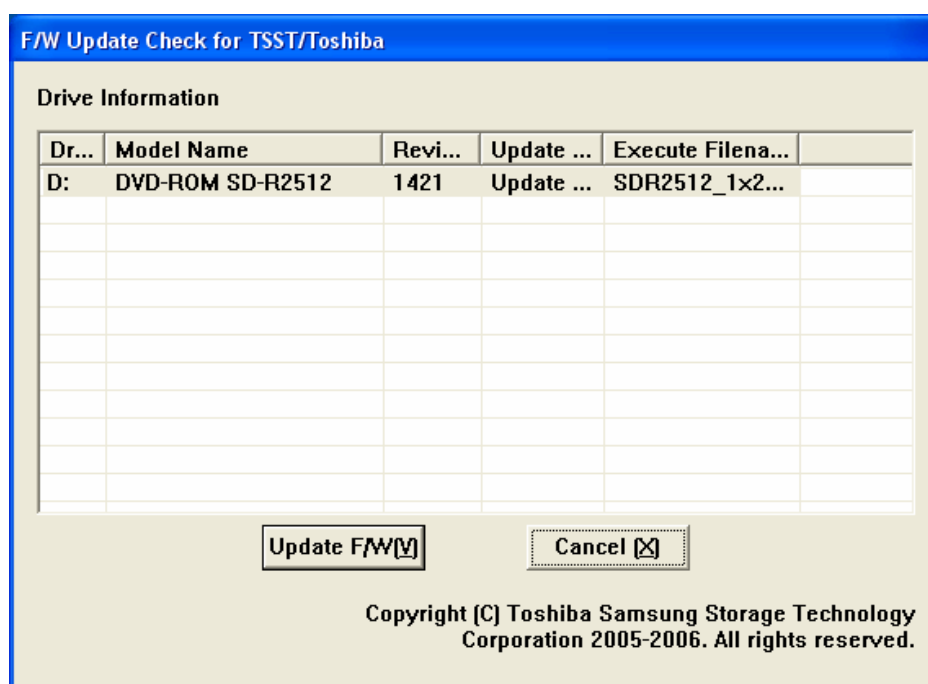
This firmware is specifically for the following DVD drives, used in the following Toshiba portable computers:

DVD drive model	DVD drive model	DVD drive model
SD-R2212	SD-R2412	SD-R2512
Satellite 1110/1115 series	Portege M200 series	Portege M200 series
Satellite 1400/1405 series	Satellite 1130/1135 series	Portege R200 series
Satellite 1410/1415 series	Satellite A10/A15 series	Satellite A50 series
Satellite 1900/1905 series	Satellite A20/A25 series	Satellite A60 series
Satellite 1950/1955 series	Satellite A30/A35 series	Satellite A70 series
Satellite 2400/2405 series	Satellite A40/A45 series	Satellite M30X series
Satellite 2410/2415 series	Satellite M20 series	Satellite P30 series
Satellite 5105 series	Satellite P25 series	Tecra A2 series
	Tecra A1 series	libretto U100 series
DVD drive model R6112	Tecra S1 series	
Satellite P25 series	Tecra TE2300 series	

Please follow the instructions below to upgrade the firmware of any of these DVD drives.

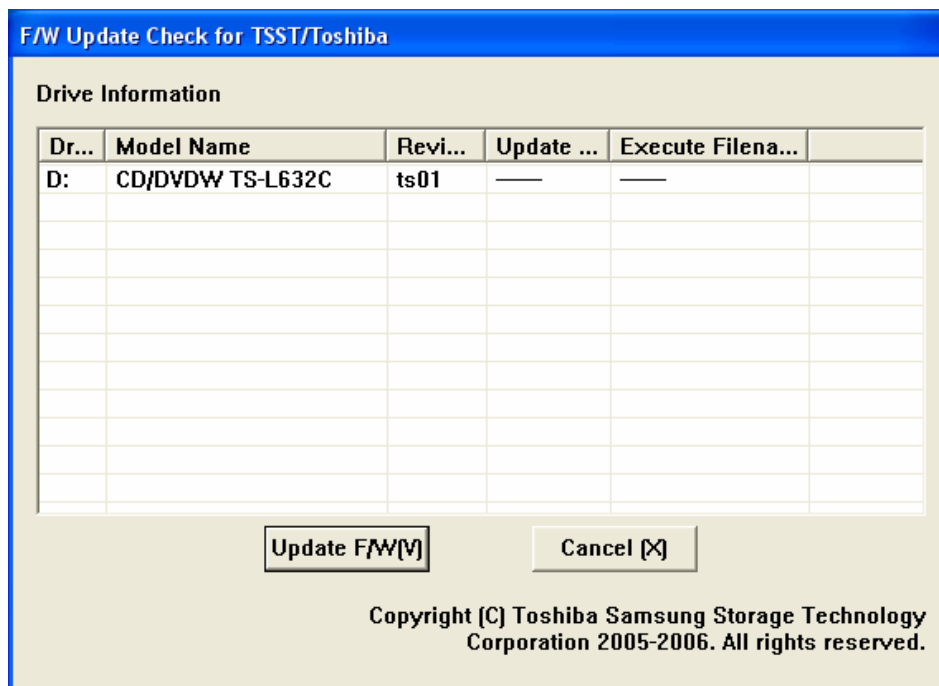
1. Connect the computer's AC adapter -- to the computer's DC IN jack, and to a wall socket. This will insure that the computer does not shut off during the firmware upgrade – which could cause the DVD drive to malfunction.
2. Download the firmware update from the Toshiba Support website, and save it to the Windows desktop, or to a convenient folder.
3. Browse to the file 'RAM16xFW_Update_TSB_0905.EXE', and double-click it to start it running. When prompted, select a folder for the firmware update files to be copied into.
4. Browse to the folder into which the files were copied, and double-click the file 'Select_WinVup_TSB.exe' to start the Firmware Update Check Utility.

The screen below should appear, presenting a table of the DVD drives that are in the computer.



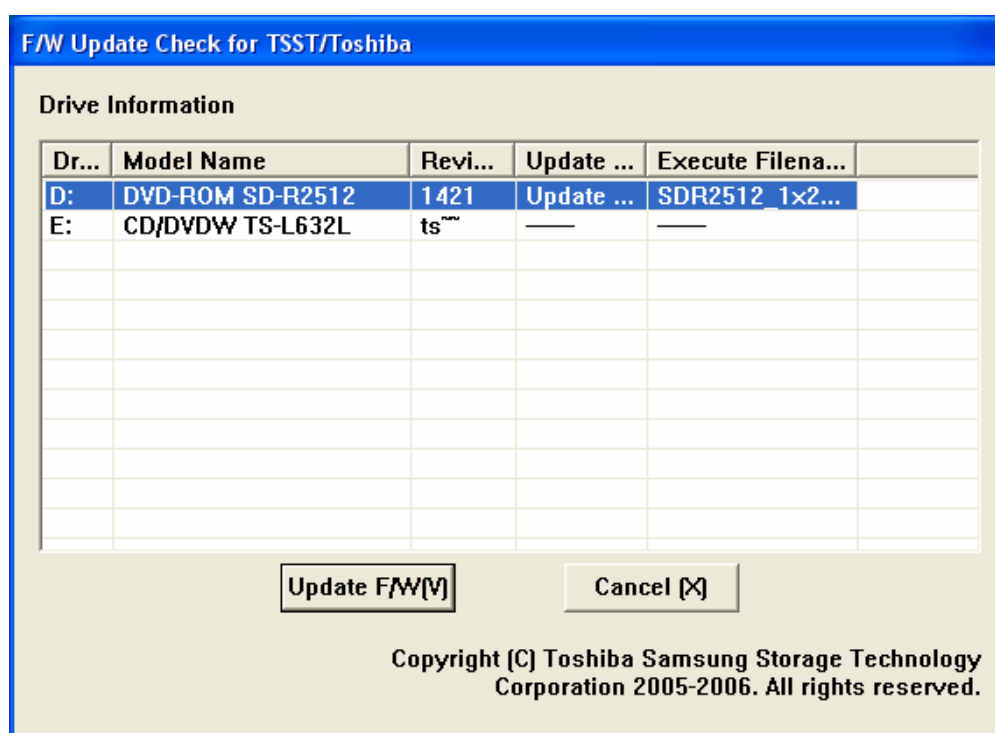
5. Look in the **Update column** for an indication of what do to next.
6. If the word "**Update**" appears in the Update column, then click the **Update F/W** button. The firmware upgrade will start. Be very careful not to turn the computer off during the update.

7. if "———" appears in the Update column, as in the screen illustration below, the firmware update does not apply to the DVD drive listed. Click the **Cancel** button. The procedure is finished.



8. If more than one drive is listed, as in the illustration, below, click the name of the drive that has “Update” listed in the Update column, and then click the **Update F/W** button.

The firmware upgrade will start. Be very careful not to turn the computer off during the update.



Error messages

If the Firmware Update Check Utility is run on a computer that does not have a DVD drive, the following message may appear. Click OK to dismiss it.



If the computer's AC adapter is not connected, the following error message will appear. Connect the AC adapter, and then click OK to continue.

